

Active@ LiveCD

User Guide

Copyright © 1999-2025, LSOFT TECHNOLOGIES INC. All rights reserved. No part of this documentation may be reproduced in any form or by any means or used to make any derivative work (such as translation, transformation, or adaptation) without written permission from LSOFT TECHNOLOGIES INC.

LSOFT TECHNOLOGIES INC. reserves the right to revise this documentation and to make changes in content from time to time without obligation on the part of LSOFT TECHNOLOGIES INC. to provide notification of such revision or change.

LSOFT TECHNOLOGIES INC. provides this documentation without warranty of any kind, either, implied or expressed, including, but not limited to, the implied warranties of merchantability and fitness for a particular purpose. LSOFT may make improvements or changes in the product(s) and/or the program(s) described in this documentation at any time.

All technical data and computer software is commercial in nature and developed solely at private expense. As the User, or Installer/Administrator of this software, you agree not to remove or deface any portion of any legend provided on any licensed program or documentation contained in, or delivered to you in conjunction with, this User Guide.

LSOFT.NET logo is a trademark of LSOFT TECHNOLOGIES INC.

Other brand and product names may be registered trademarks or trademarks of their respective holders.

Contents

1 Product Overview	4
1.1 About Active@ LiveCD	4
1.2 Requirements for Using Active@ Boot Disk.....	6
1.3 Downloading and Creating Active@ LiveCD	6
1.4 Booting from a CD, DVD or USB Media	9
2 Navigating the Active@ LiveCD Shell	12
2.1 Start button menu	12
2.2 Desktop: Shortcuts, Info panel & Configuration	13
2.3 Quick launch icons.....	15
3 Programs and utilities	17
3.1 Programs	17
3.2 Utilities	40
4 About Boot Priority	54
4.1 BIOS Boot.....	54
4.2 UEFI Secure Boot	55
5 Glossary	56

1 Product Overview

This chapter gives an overview of Active@ LiveCD.

1.1 About Active@ LiveCD

Active@ LiveCD is a powerful set of tools that will help you in a number of data recovery and data security scenarios.

Active@ LiveCD combines a number of powerful tools that will enable you to recover lost data, reset Windows passwords, make computer system backups and securely erase data. Active@ LiveCD starts when you start your computer from a bootable CD/DVD/BD Disk or USB Flash Drive.

When you use Active@ LiveCD, you gain access to the drive's data on a physical level, and on a logical level, bypassing the resident operating system. What this allows you to do is to lock selected volumes for your exclusive use. Locking a volume is important if you want to wipe the data residue from an unoccupied space on the drive, create a "clean" data backup or recover files or folders located on system volumes.

When you boot from the local hard drive, drive volumes cannot be locked by the resident system. The recovery operation must have exclusive access to the target location. If a service or another application gains access to the target location, it might write over the files that you are trying to recover, rendering them un-recoverable.

Here are some other functions that you can perform by booting from the CD/DVD/USB:

- Backup the system drive - If you back up the system drive with Windows or Linux OS started from the same drive, when you restore the backup, it starts as though you are recovering from a loss of power. The boot up starts with system integrity checking. If you back up the system drive with Windows/Linux starting from an external drive, the restored system starts clean.
- Wipe unused data from the system records and directories, from MFT (on NTFS), from unused clusters, from file slack space (see Active@ KillDisk) - A "clean" wipe operation is not possible with Windows/Linux started from the same drive. If you wipe data with Windows/Linux started from an external drive, the wipe performs cleanly.
- Delete files - If you delete files with OS starting from the same drive, Trash Can, Recycle Bin or Volume Shadow Copy service can still be active, keeping the previous version of the file or even a snapshot of the whole disk. It is possible that an uninvited intruder can retrieve this confidential data. If you delete files with the operating system booted from an external drive, the deletion is permanent.

- Recover Files – when you boot from an external disk, no operating system activities are expected on local system disks. You can recover your deleted files, and data on deleted\damaged volumes without the danger of data being overwritten by the operating system.

Active@ LiveCD contains the following products and utilities:

- Active@ Disk Backup
- Active@ Partition Recovery
- Active@ UNDELETE
- Active@ Password Changer
- Active@ Disk Editor
- Active@ KillDisk
- File Managers: Dolphin & Krusader
- Network operations utilities to help you map network drives (Network Folder Wizard), view network status, configure IP settings and firewall and to help you connect and work with a server remotely.
- Utilities to monitor the status of your hard disk, copy, move and delete files and folders create a text file, use a calculator, create a paint graphic, save display snapshots, xterm.
- System utilities to create, delete, format and resize partitions (GParted, KDE Partition Manager, Yast Partitioner), run command prompt commands (Terminal), check disk integrity, scan disks for viruses, display system information (System Monitor) and configure the display parameters.
- Internet tools: Web Browser, Mail Client, Remote Desktop Client

1.1.1 About the Operating System

Because the Active@ LiveCD ISO image has been created using the OpenSUSE Linux operating system and based on KDE desktop, it enables you to have access to many basic Linux features and utilities using the KDE-style user interface.

The bootable image contains a variety of plug-ins, drivers, utilities and applications.

Here are some more advantages in Linux & KDE-based LiveCD:

- It does not matter if your computer is based on a legacy BIOS or UEFI secure boot. GRUB boot manager will boot the system properly.
- After LiveCD boot up, you can download and install any Linux packages (RPM), for example OpenOffice or Mozilla Firefox browser.

- When booted from USB disk, all user settings, as well as downloaded & installed packages are stored on USB, thus saving the session. When you boot the next time, all settings will be restored.
- You can use the standard dialogs, like File Open, Save As, and so on.
- Security: Networking, Firewall and support for SSL (Secure Socket Layer) is included.
- PnP (Plug and Play) support: Hardware devices can be detected and installed while LiveCD is running. This supports any in-box PnP device, including removable media and mass-storage devices. This means that you can plug in a mass-storage device to recover data from or use it for data backup.



Note There are two Active@ LiveCD packages being redistributed. One is a public evaluation FREE DEMO. These applications run in DEMO mode, not all functions are available. Another package has been supplied to clients after purchasing a registration key. Both packages can be activated with a registration key.

1.2 Requirements for Using Active@ LiveCD

To use Active@ LiveCD, you must have the following:

- 64-bit Intel/AMD processor
- 2GB or more RAM
- A CD/DVD/BD drive or a USB mass storage device to boot from

In addition to the above, you must be able to turn on the computer and you must have access to the system board BIOS setup.

1.3 Downloading and Creating Active@ LiveCD

You must perform these operations on a separate computer that has a healthy hard drive and access to the Internet.

To download Active@ LiveCD:

1. On the Internet, navigate to <https://www.LiveCD.com>
2. To download the freeware version, select the desired host platform (Windows or Linux) and click the **DOWNLOAD** link
3. To download full-featured professional version of Active@ LiveCD, click the **BUY NOW** link and follow the procedure for paying
4. You can save the file to a folder on your machine or you can run the file directly from the Internet folder
5. On Windows platform:

- a) Run downloaded **ActiveLiveCD.EXE**
 - b) The install wizard will lead you through the pages to agree to the terms of the license and determine the destination folder
 - c) After Active@ LiveCD has been successfully installed, select the **Run Active@ Boot Disk Creator** check box and click **Finish**
6. On Linux platform:
- a) Extract all files from downloaded **ActiveLiveCD.TAR.gz**
 - b) Run **BootDiskCreator** script
 - c) If authentication is required to access the CD/DVD/USB media, type password for the Super User (**root**)

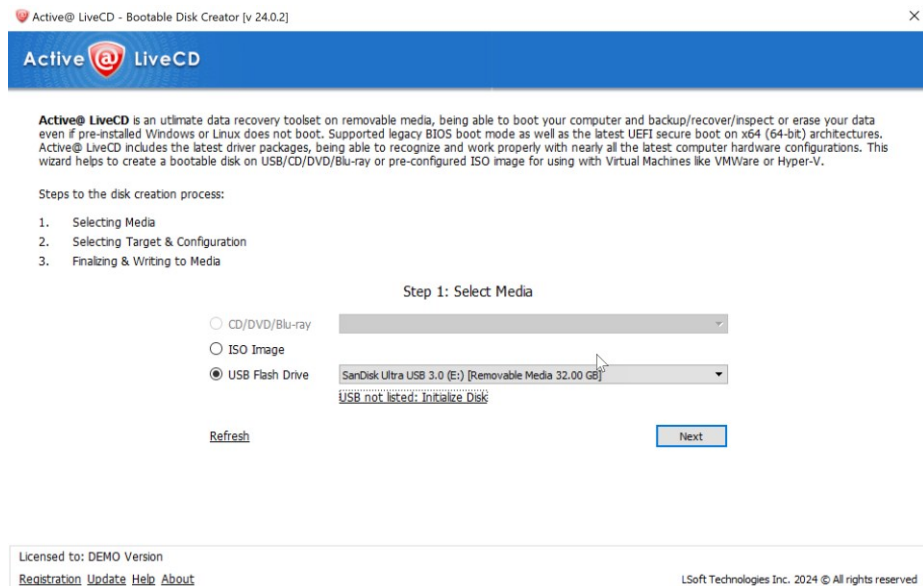
Continue with the next section to configure boot options and create a media.

1.3.1 Active@ Boot Disk Creator

Active@ Boot Disk Creator helps you in preparing a bootable CD/DVD/Blu-ray or a USB Flash drive. This device can be used to start a computer with a damaged hard drive and recover data, recover partitions, wipe or erase data, create a disk image or repair security access issues.

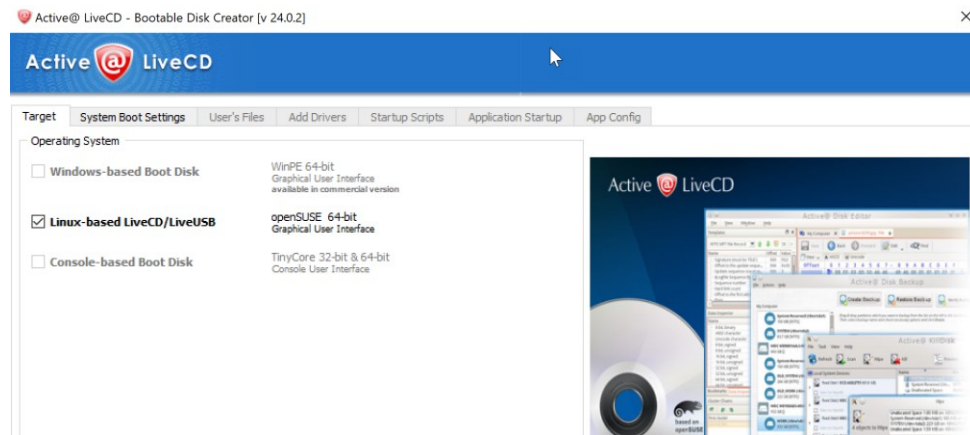
To prepare a bootable device for Windows:

1. Select the desired bootable media: CD/DVD/Blu-ray, USB Flash Drive or pre-configured ISO Image file (can be used with Virtual Machines like VMWare or Hyper-V, or can be burned to CD/DVD/BD later on):



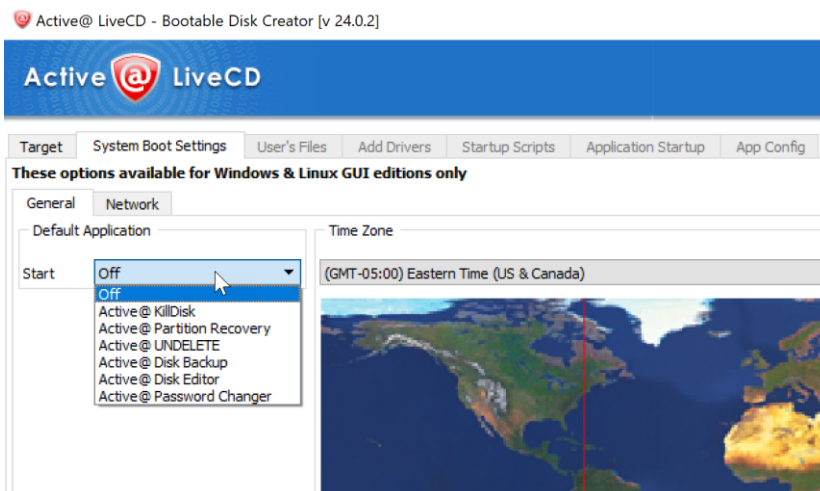
If more than one CD/DVD burners exists, or several USB disks are inserted, select a proper device from a combo-box. If your USB Disk is not displayed in a combo-box, click the link below and initialize it properly.

2. If you have purchased commercial version of Active@ LiveCD, click **Registration** link to register software on your or your business name. Registration eliminates freeware version limitations and activates all professional features of commercial software.
3. Click **Next**.
4. Make sure that **Linux-based LiveCD/LiveUSB** checkbox is selected:



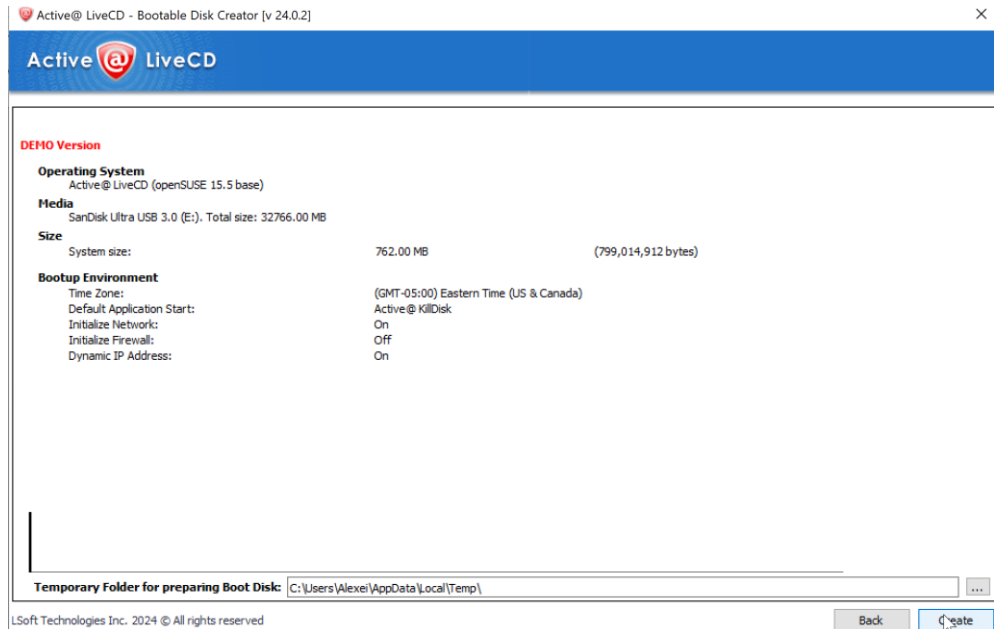
At this step you can specify additional options:

- a. To specify additional boot options, click **System Boot Settings** tab. You can change default settings to be used: **Time Zone** and **Default Application** startup mode:



Default Application option allows you to launch any of Active@ software products at system boot up.

- b. **Network** - second level tab allow you to pre-define **Network Settings**: network initialization, dynamic or static IP configuration and firewall state.
 - c. **Application Startup** tab allows to configure default application to run at boot up time with command line parameters
5. Click **Next**. Verify the Selected Media, Sizes and Boot-up Environment.



6. Click **Create**. A progress bar will appear while media is being prepared.
7. Your bootable drive is ready for use, click **OK** and **Finish** to exit the setup.



Note USB Drive or blank CD/DVD/BD must be inserted and chosen explicitly on the first step, before you can proceed to the next step.



Note When you prepare **USB Flash Drive** bootable media, it will be re-formatted, thus all data residing on the media will be erased.

1.4 Booting from a CD, DVD or USB Media

You can start your computer and perform data backup, recovery, erase and other functions by starting from a bootable CD, DVD, Blu-ray or USB device.

To start your computer with the Active@ LiveCD, you must first prepare and burn ISO image file and burn it to the medium, or write it to USB Disk using Active@ Boot Disk Creator.



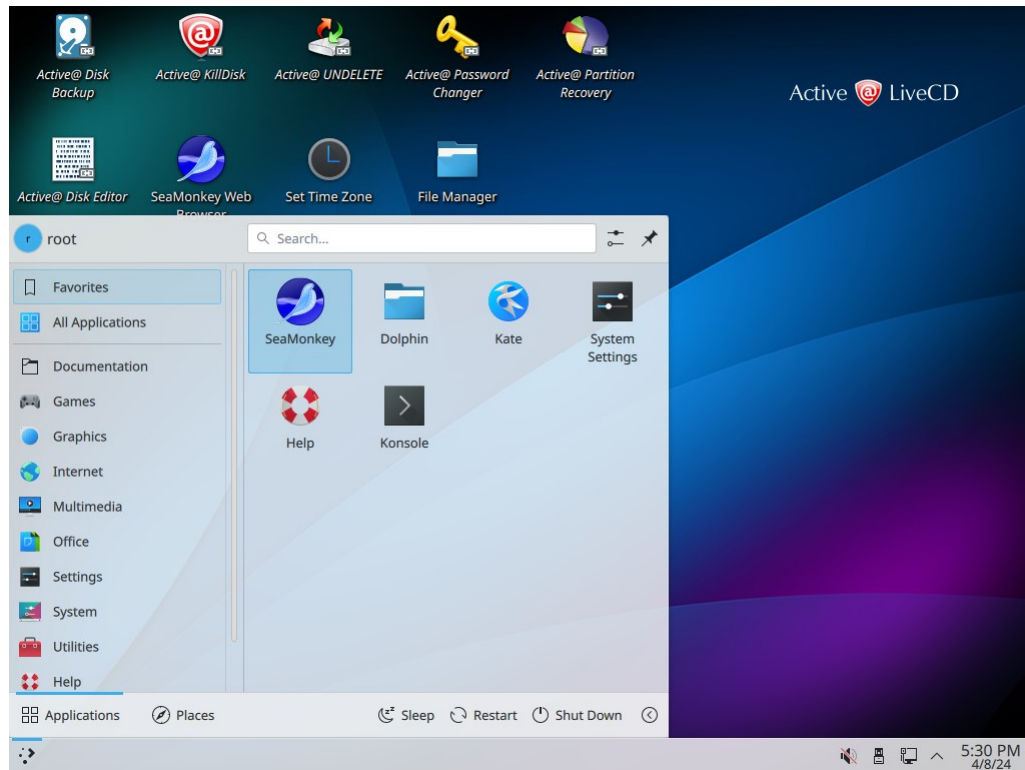
Note For instructions on setting boot sequence priority in the system BIOS, see the Chapter: About Boot Priority.

To boot from the configured device:

1. To boot from a CD, DVD or Blu-ray drive, insert bootable **Active@ LiveCD** CD/DVD/BD into the slot.
2. To boot from a USB device, insert bootable **Active@ LiveCD** USB Flash disk into a USB port.
3. Make sure that CD/DVD/BD or USB device has a boot priority over HDD in BIOS and start the power on the machine. LiveCD will start loading.
4. If you want to cancel booting up the Active@ LiveCD and load the operating system on the hard drive, move a cursor to **Boot from Hard Disk** and press Enter. Otherwise the screen will change showing the loading of the Linux kernel.



5. On this Welcome screen you can setup default **Language** for operating system messages and dialogs (applied not for all applications), apply **Failsafe** boot configuration, change **Video Mode** and **Kernel** boot options.
6. If you do nothing on this page, after the 30-second progress display, Active@ LiveCD will continue booting up automatically.
7. After the Welcome start screen, the screen will go dark for a short period of time with a progress being displayed. Please wait for the desktop to be loaded.

8. The **Active@ LiveCD** desktop (KDE-style) appears:

You are ready to use Active@ LiveCD utilities.

After starting the computer this way, you will have a full exclusive access to the system drive. With this kind of access, you can perform tasks and operations that are not as effective or not possible when OS has been started from the same hard drive that you are trying to operate on.

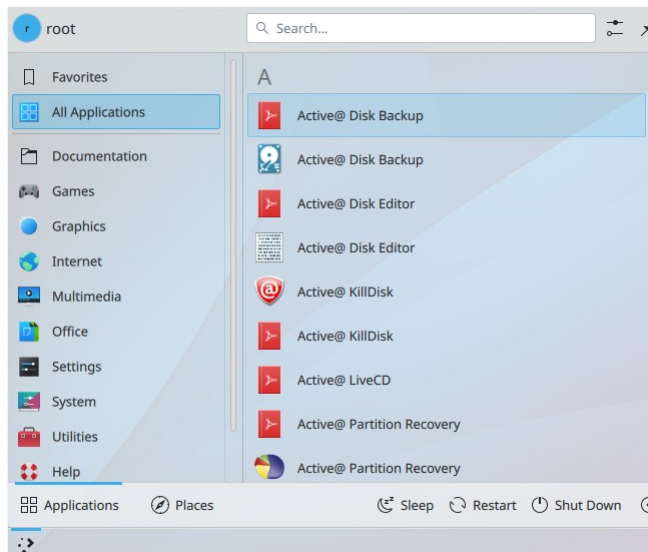
2 Navigating the Active@ LiveCD Shell

The Active@ LiveCD shell works in a way similar to the KDE or Windows shell. The main interface of the shell appears as a taskbar at the bottom of the screen. Some application shortcuts are located on the Desktop.

On the left is a start button with the KDE symbol on it. Several quick launch icons appear to the right of the start button.

2.1 Start button menu

The Active@ LiveCD start button is the central launching point for applications, utilities and support documentation. To access one of the applications or utilities, click the start button. A menu appears with shortcuts to applications, utilities and documentation under the following headings:



- **Applications** – Consist of data backup, data recovery and data security programs that allow you to:
 - Back up or restore physical and logical hard drives, including folders, data files and installed applications.
 - Recover data from deleted or damaged partitions on attached or external drives, portable drives and memory cards.
 - Recover data from damaged or deleted files or folders.
 - Reset password and user accounts on your Windows system.
 - View and edit disk sectors content in raw format, apply colored templates for specific disk structures (MBR, boot sector, MFT,...).

- Securely erase data from hard drives in a way that it is impossible to restore the data.
 - Wipe data from unused clusters on a regular basis to make your drive's deleted files or temporary data unavailable to intruders.
 - Monitor the reliability status of your local hard drives to help prevent data loss due to hard drive failure.
- **Documentation** – Documents (PDF format) on all applications included with Active@ LiveCD.
 - **Graphics** – KDE Image Viewer (*Gwenview*), being able to preview and edit almost all picture formats (JPG, PNG, XPM, GIF, TIFF, ...)
 - **Internet** – *SeaMonkey* web browser allows to explore the Internet, read RSS, download packages and so on... *SeaMonkey Mail* client allows to configure email accounts, send and receive emails. *Remmina Remote Desktop Client* allows to connect to remote hosts using different protocols (RDP, SSH, VNC)
 - **Office** – *Okular* Document Viewer – previews almost all document types (PDF, PS, EPS, DjVu, FB2, eBook, CHM, ...). *Kate* Advanced Text Editor previews and edits text files stored in different code pages. *Kompare* Diff/Patch Frontend allows to compare any files bit-by-bit to find out differences, if any exist.
 - **Utilities** – *Ark* Archiving tool to create and de-compress TAR, GZ and ZIP archives. *KCalc* - Scientific Calculator. *Spectacle* – Screen Capture Program activated with a PrintScreen key.
 - **System** – *GParted* Partition Editor displays, creates and edits local disks and partitions. *YaST Control Center* – advanced system management tool. *ClamTk* Virus Scanner – downloads the latest virus database and scans your local disks for viruses. *VeraCrypt* GUI application attaches and manages encrypted volumes stored in files. *Info Center* – Operating System Summary, Memory, Hardware, Drivers & Network information. *GSmartControl* – Hard Disk Health inspection utility monitors disk's temperature and other SMART attributes. *Konsole* Terminal, *Super User Mode* Terminal and *XTerm*. *Dolphin* File Manager – displays, copies/moves and manages files/folders on local disks as well as network attached drives. *Krusader* File Manager – is a two panel file manager having many advanced features.

2.2 Desktop: Shortcuts, Info panel & Configuration

Several permanent icons appear on the Desktop after Active@ LiveCD start up. To see a "hover box" with additional information about a quick launch icon, hold your mouse pointer over the icon.

Use these icons to conveniently open the following programs:

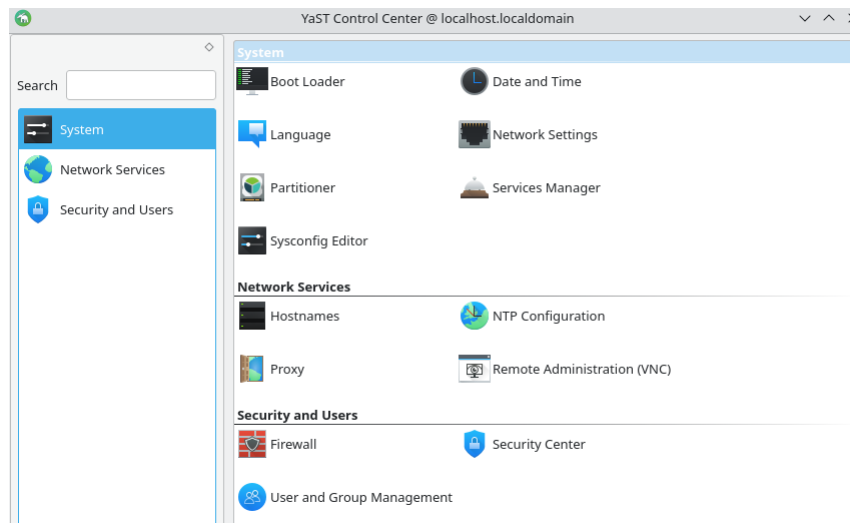
- Active@ Disk Backup

- Active@ UNDELETE
- Active@ Partition Recovery
- Active@ Password Changer
- Active@ Disk Editor
- Active@ KillDisk
- Dolphin File Manager
- SeaMonkey Web Browser
- Set Time Zone (important to verify for the first launch)

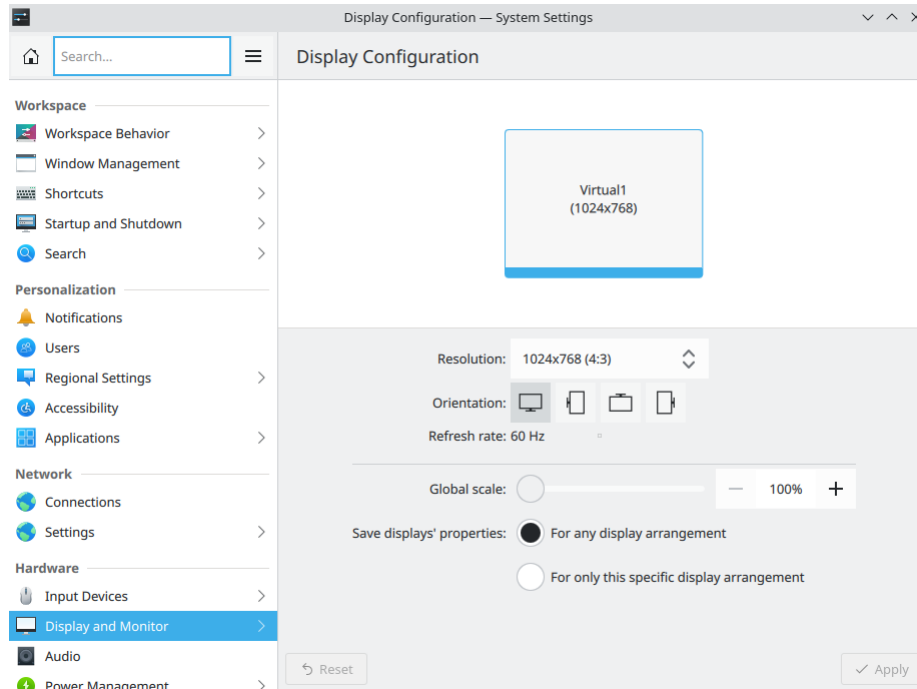


Note To add more shortcuts to the Desktop, configure existing or remove undesired ones, invoke a context menu (right mouse click) for the Desktop and execute related commands.

YaST Administrator Settings – menu item is accessible from **Start** → **Settings** menus. It is the same as **Control Center**.



Configure Desktop (Plasma Desktop Control Panel) configures User accounts, Display & Monitor settings, Network settings, File Associations, System Notifications, Locale settings, Shortcuts & Gestures, Desktop Effects & Workspace Appearance, Accessibility, Default Applications, Window & Workspace Behavior, SSL Preferences, Device Actions, Input Devices, Power Management, Removable Devices, Multimedia, Software Manager, Date & Time Settings, Font Management, Login Screen, Permissions, Startup & Shutdown options



Configure Desktop (Plasma Desktop Control Panel) configures User accounts, Display & Monitor settings, Network settings, File Associations, System Notifications, Locale settings, Shortcuts & Gestures, Desktop Effects & Workspace Appearance, Accessibility, Default Applications, Window & Workspace Behavior, SSL Preferences, Device Actions, Input Devices, Power Management, Removable Devices, Multimedia, Software Manager, Date & Time Settings, Font Management, Login Screen, Permissions, Startup & Shutdown options

2.3 Quick launch icons

On the right side of the taskbar is a system tray with a clock showing the system time. Hovering your mouse over the clock will show you the current date and your time zone.

As well, several icons provide quick access to system utilities. To see a “hover box” with additional information about a system utility icon, hold the mouse pointer over one of the icons.

Use these icons to conveniently open these utilities:

- Virtual keyboard
- Clipboard
- Sound Volume & Mixer
- CD/DVD & USB attached disks
- Network connections
- Keyboard layout

- Show Hidden Icons button (Notifications & Software Updates)

If a network is installed and activated, click on the Network Interface and it will display full configuration details such as operational status, IP address, DNS server address, firewall status, and so on.

The icon that is placed all the way to the right (**Panel Tool Box**) allows customizing task bar & quick launch icons: adding more applets & widgets, removing existing ones, taskbar height change and so on.



Note If you run Active@ LiveCD from USB disk, all customizations to the Desktop, Time Zone, Application Icons, Task Bar & Quick Launch icons will be stored to USB permanently and restored the next time you launch Active@ LiveCD.

3 Programs and utilities

This chapter provides detailed descriptions of all the programs and utilities included with Active@ LiveCD.

Applications are listed in this chapter in the order that they appear in the Active@ LiveCD start menu.

3.1 Programs

- **3.1.1 Active@ Disk Backup** - Create an exact image of the data stored in selected partitions of a hard disk or an image of the entire hard disk.
- **3.1.2 Active@ Partition Recovery** - Recover deleted or damaged partitions located on data volumes, attached hard drives, as well as on external USB drives and Memory Cards (SunDisk, MemoryStick, CompactFlash, etc.).
- **3.1.3 Active@ UNDELETE** - - Advanced recovery tool: restores files that have been deleted, damaged or destroyed by a virus or if the file directory has been lost as a result of human error. Recovers damaged RAID's & volumes.
- **3.1.4 Active@ Disk Editor** - Edit a disk's raw sector data to analyze and repair the MBR and other important files. Advanced search capabilities and templates for viewing MBR, Boot Sectors, LDM, MFT records are available.
- **3.1.5 Active@ Password Changer** - Recover user accounts from forgotten or damaged user passwords.
- **3.1.6 Active@ KillDisk** - Destroy data permanently from any computer. Also, wipe deleted data, securely removing all data in unoccupied sectors

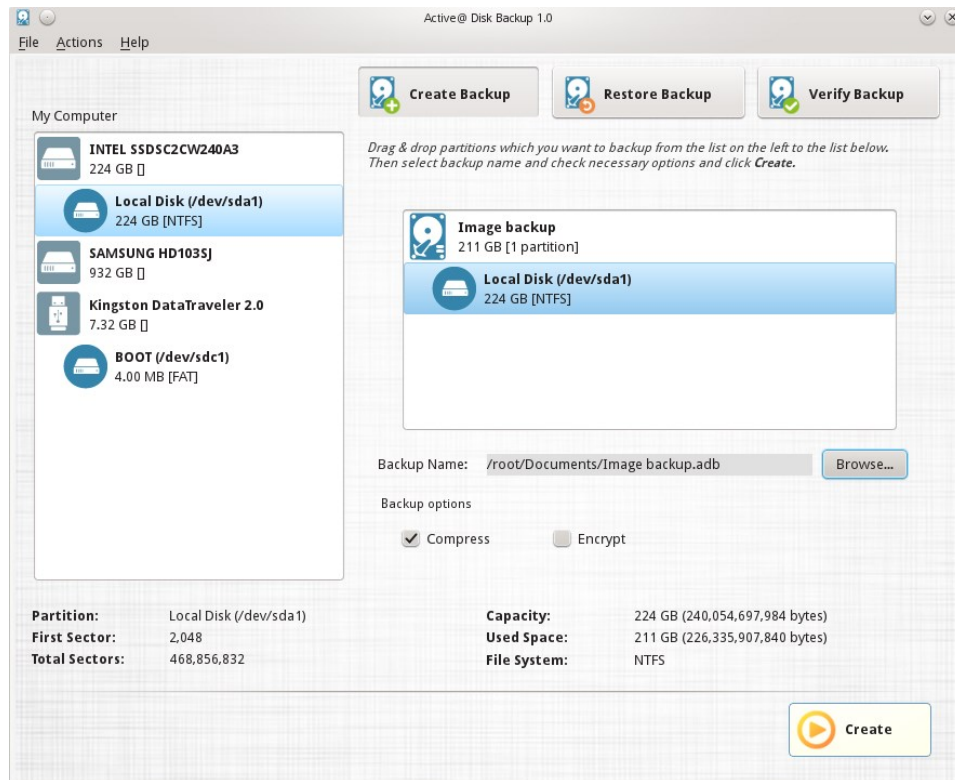
3.1.1 Active@ Disk Backup

Active@ Disk Backup is a solution that allows you to create an exact image of the data stored in selected partitions of a hard disk or an image of the entire hard disk. You can protect your valuable data by regularly making a disk image and keeping it in a safe place. If you have trouble with data corruption, or if you want to refer to an archived version of a file, you can easily restore the data.

The application provides many tools when it comes to backing up data on your hard disk:

- **Create Backup** - lets you to create a regular type backup archive of an entire disk or of selected partitions in the system.
- **Restore Backup** -lets you to restore data from a disk backup archive.

- **Verify Image** - checks the integrity of a disk backup archive file.



Creating Backup

At the top of the main window there are three buttons corresponding to three main actions of Active@ Disk Backup. Select **Create Backup** to switch to creating backup mode. Alternatively you can choose Actions > Create Backup in the main menu.

Main window layout

On the left side of main application window there is a list of all disks and partitions you can backup. If some disk or partition is missing, Active@ Disk backup cannot make a backup of it (for example, because the disk is offline). To refresh the list of partitions click on **Reset** button.

To the right from partition list is a backup list. It shows the brief information about backup in the root (backup name, data size and number of partitions) and all partitions included into backup.

Under the backup list there are backup name field and backup options controls.

Below partition and backup lists there is property information. Its content depends on the item selected. It could be information about selected disk, partition or backup description.

The bottom part of the window occupies **Create** button and progress information which is not visible until backup is running.

Choosing a backup name

Click on **Browse...** button to open a file selection dialog and enter the required backup name and location. Backup files have .ADB extension.

Selecting partitions to backup

Drag and drop a partition you want to backup from the partition list on the left to the backup list on the right. As soon as you drop a partition its icon to the partition list changes reflecting its status as being included in the backup. Short backup information is also updated reflecting new backup size and number of partitions.

Setting backup options

Under the backup list there are two checkboxes named **Compress** and **Encrypt**. If you want backup to be compressed (default option), select **Compress** checkbox.

Since data on the disk you backup may contain sensitive information you might want to encrypt its contents. To do it, select an **Encrypt** checkbox. You will be prompted for a password to use for encryption. Please make sure you don't lose your password, since you will need it to restore the data back. Without the password it will be impossible to restore your backup.

Adding backup description

You can optionally add a description to the backup that you are creating. To do this click on the backup item in the top of the backup list.

The property panel on the lower side of the window will show a text field for backup description. Enter any text description you like.

Starting disk backup creation

As soon as you have entered the minimum of the information required (i.e. backup name and at least one partition selected for backup) the **Create** button in right bottom corner of the window will be enabled giving you the ability to start making your backup. As soon as all parameters are set, click **Create** button to start backup creation.

While disk backup is in progress, **Create** button is replaced with **Cancel** button and to the left of it progress information is displayed. It includes the current operation, amount of data processed and time left.

You can interrupt backup creation process by clicking on **Cancel** button.

Restoring Backup

At the top of the main window there are three buttons corresponding to three main actions of Active@ Disk Backup. Select **Restore Backup** to switch to creating backup mode. Alternatively you can choose Actions > Restore Backup in the main menu.

Open existing backup

Click on **Open...** button and select an existing backup. Active@ Disk Backup will open the file and display backup information in backup list in the right part of the main window. It will include backup name, data size and list of all partitions in backup. If you select one of the items in backup, the properties of the item will be displayed below partition and backup lists.

To see a backup description, select the top item in the backup list. Backup description field will appear in the bottom with the text that you have provided while you were creating the backup.

If backup is encrypted, you will be prompted to enter a backup password. Backup cannot be restored without a valid password.

Selecting partition to restore

Drag and drop a partition you want to restore from the backup list on the right to the partition list on the left. As soon as you drop a partition its icon in the partition list changes reflecting its status as restored. You need to drop the partition on an existing partition of the same or bigger size or on unallocated space of the same or bigger size in partition list.

If you wish to make a restored partition active, click on partition in backup list to make **Active** checkbox enabled and then select the checkbox.

Starting disk backup restoring

As soon as you have defined the partition you want to restore, click **Restore** button to start backup restoring.

While disk backup is in progress, **Restore** button is replaced with **Cancel** button and to the left of it you can see the progress information being displayed. It includes the current operation, amount of data processed and the time left.

You can interrupt backup restoring process by clicking on **Cancel** button.

Verifying Backup

At the top of the main window there are the three buttons corresponding to three main actions of Active@ Disk Backup. Select **Verify Backup** to switch to backup verification mode. Alternatively you can choose Actions > Verify Backup in the main menu.

Starting disk backup verification

Click **Verify** button to start verifying your backup.

While disk backup verification is in progress, **Verify** button is replaced with **Cancel** button and to the left of it progress information is displayed. It includes the current operation, amount of data processed and time left.

You can interrupt backup verification process by clicking on **Cancel** button.

During backup verification Active@ Disk Backup computes the check sums of data stored in backup and compares them to the ones stored in backup.

Successful comparison means data in backup file match the original and backup is valid, otherwise it is corrupted during creation or storing. The verification result is shown in dialog box in the end of verification process.



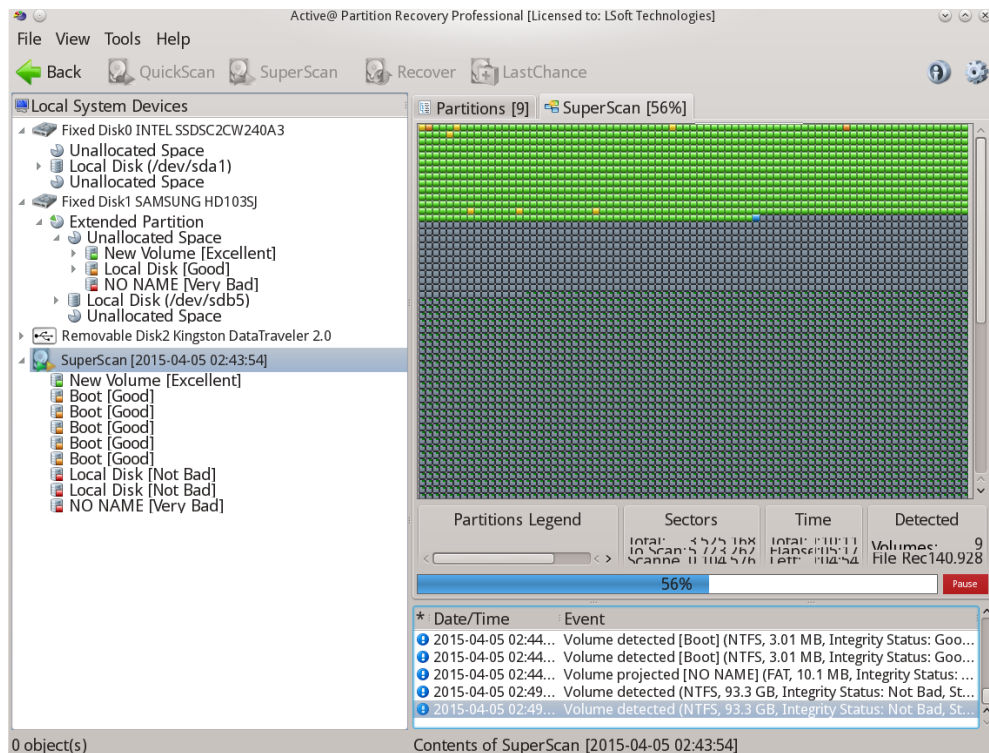
Note For more detailed instructions and support, see the Active@ Disk Backup User Guide.

3.1.2 Active@ Partition Recovery

Active@ Partition Recovery is a data recovery utility that you can use to:

- Find and recover deleted partitions and logical drives
- Create a Drive Image for backup purposes
- Fix or create a typical MBR (Master Boot Record)

This means that you can recover deleted or damaged partitions located on data volumes (D:, E:, and so on), attached hard drives, as well as on the external USB drives and Memory Cards (SunDisk, MemoryStick, CompactFlash, etc.). On a system partition, BOOT.INI is corrected automatically (if required) in order to repair an un-bootable system. Boot Sectors on the damaged volume are also being corrected in order to maintain the integrity of the partition. This utility also enables you to fix a damaged MBR and to delete invalid partitions.



Data Recovery Tips

DO NOT WRITE ANYTHING ON THE DRIVE THAT CONTAINS YOUR IMPORTANT DELETED DATA!

When you install software, you write data on the disk, which can destroy your deleted data. If you have only one logical drive, physically remove the hard drive from the computer and install it as a secondary logical drive on another computer where data recovery may be possible.

DO NOT SAVE RECOVERED DATA ON THE SAME DRIVE THAT CONTAINS THE LOST OR DAMAGED DATA!

When saving recovered data, you are writing records to the file table. If you write these records on the same drive that contains the damaged data, you are destroying the file table records that you are trying to recover. At the same time, you are probably destroying the file table records for other deleted entries. It is best to save recovered data on another logical, removable or network drive.

CREATE A RAW DISK IMAGE IF YOU HAVE AN EXTRA HARD DRIVE, OR OTHER LOGICAL DRIVES THAT ARE BIG ENOUGH!

A Raw Disk Image is a single file that stores all the data from your logical drive or physical device as a mirror image. Having a Raw Disk Image can be useful when you want to back up the contents of the whole drive, and restore it or work with it later. Before you start recovering deleted files, it might be a good idea to create a Raw Disk Image for the one drive, if you have enough space on another drive. If you do something wrong while recovering the files (for example, recovering them onto the same drive and destroying the data), you will be able to recover these deleted files and folders from the Raw Disk Image that you have wisely created in advance.

Find and recover deleted partitions and logical drives

To find and recover deleted partitions and logical drives:

1. From the **Active@ LiveCD** shell, click **Start > Favorites > Active@ Partition Recovery**. The **Active@ Partition Recovery** workspace appears with all available devices listed in a tree view under **Local System Devices**.
2. To scan an unallocated space, select it. Known details of the selected item are displayed in the right pane.
3. To scan the unallocated space in basic mode, do the following:
 - a. Click **Quick Scan**. The status bar displays the progress of the scan.
 - b. After the scan is complete, a list of all allocated and unallocated partitions appears in the **Local System Devices** list.
4. If you cannot see a logical drive, to process the whole surface of a disk, select it and click **SuperScan, and the Super Scan Options** dialog box will open.

5. Do the following:
 - a. From the **Scan What** drop-down list, choose the type of data unit (sectors, Bytes, MB, GB) you want SuperScan to consider.
 - b. To restrict the scan to a small number of sectors, indicate the **From sector** and the number of sectors to scan.
 - c. Select the check box next to each type of partition that you want to scan.
 - d. Click **Start**. The status bar displays the progress of the scan.
 - e. After the scan is complete, a new folder named **SuperScan** will be created in the **Local System Devices** list.
6. To display a smaller set of SuperScan results, do the following:
 - a. Right-click the **SuperScan** device node folder.
 - b. From the context menu choose **Filter...** The **Filter Found Partitions** dialog box appears.
 - c. To select the types of file systems data that will be displayed, in the **File Systems** area, clear the check box beside the types that you do not want to be displayed.
 - d. To display only those partitions within a specified size limit, in the **Volume Size** area, indicate the minimum and maximum size of partitions in Megabytes.
 - e. To use basic filtering parameters, in the **Filter Type** area, click **Use Basic Filtering**.
 - f. To select displayed partitions based on partition status, in the **Basic Filtering [Partition Status]** area, clear the check box next to each partition status number that you do not want to display.
 - g. To use advanced filtering parameters, in the **Filter Type** area, click **Use Advanced Filtering**.
 - h. To restrict displayed results for NTFS-specific parameters, in the **Advanced Filtering [NTFS specific]** area, select the check box beside all the types of data that you want to display.
 - i. To restrict displayed results for FAT-specific parameters, in the **Advanced Filtering [FAT specific]** area, select the check box beside all the types of data that you want to display.
 - j. Click **Filter**. The right panel displays the filtered results.
7. You can manage other aspects of **SuperScan** results:
 - a. To resume a stopped **SuperScan**, right-click on the folder and choose **Resume** from the context menu. **SuperScan** will resume.
 - b. To save scan results, right-click the **SuperScan** folder and choose **Save Scan Results**. Similarly, you can open the saved scan results at a different time.
 - c. To delete a **SuperScan** folder, right-click the folder and choose **Delete**.

- d. To display detailed properties of a **SuperScan** folder, right-click the folder and choose **Properties**.
8. To recover deleted or damaged partition select it and click **Recover**. The **Active@ Partition Recovery** parameters dialog box will open. To specify recovery options, do the following:
 - a. To ensure that the Windows operating system assigns the correct letter to the disk, select a disk letter from the **Assign Disk Letter** drop-down list.
 - b. To set the recovered partition as active and allow the system to boot from it, select the **Set Partition Active** check box.
 - c. The recovery process checks the boot sector and fixes it if it is damaged. Select **Automatic** or **Manual**, depending on how you want to do this.
 - d. If the disk has an extended partition, select the **Create Extended Partition First** check box and/or **use ALL Unallocated area** check box. If these areas are not available, these check boxes will be disabled.
 - e. To save a copy of the partitioning information before recovering, select the **Backup Current Partitioning Info** check box and indicate the file name to store the backup.
 - f. Click **Recover**.

The partition is recovered at the new location.

Creating a Raw Disk Image

A Raw Disk Image is a mirror copy of your entire logical drive or physical device stored as set of files. It might be a good idea to create a Raw Disk Image for a drive containing deleted files that you want to recover, if you have enough space on a drive which you are using for recovery. If you do something wrong while attempting to recover a partition, you will be able to recover these deleted files and folders from the Raw Disk Image of that partition.

Depending on disk image creation settings, a Raw Disk Image consists of a configuration file (with an extension .DIM) and a single file chunk, or set of files having extensions .000, .001, .002 ... (each file chunk has a size of 2GB in this case).



Important Do not save a Raw Disk Image back on the disk that you are backing up. The target location to save the Raw Disk Image must always be on another drive.

To create a Raw Disk Image:

1. In the Active@ Partition Recovery workspace, right-click on a logical drive or a physical device.
2. Choose **Create Disk Image** which will open the dialog box.
3. In the **Places** area, select another physical device or another logical drive.
4. Browse to the folder where you want to save the Disk Image.
5. In **Name**, give the Disk Image file a descriptive name.
6. Click **Save**. A progress bar appears.

Watch the progress and wait while drive's contents are copied to the new location. You can cancel the process of image creation anytime by clicking Stop.

Fixing or creating the MBR

The MBR (Master Boot Record) is created when you generate the first partition on a hard disk. It is probably the most important data structure on the whole disk. The location is always track (cylinder) 0, side (head) 0, and sector 1. The MBR contains the partition table for the disk and a small amount of executable code. On x86-based computers, the executable code examines the Partition Table, and identifies the system partition. The MBR then finds the system partition's starting location on the disk, and loads a copy of its Partition Boot Sector into memory. The MBR then transfers execution to executable code in the Partition Boot Sector.

To fix or create a typical MBR:

1. In the Active@ Partition Recovery workspace, in the **Local System Devices** list, select a disk.
2. From the **Tools** menu, choose **Fix MBR (Create Typical MBR)**. A **Warning** message appears.
3. Click **Yes**.

The MBR is fixed.



Note For more detailed instructions and support, see the Active@ Partition Recovery Documentation.

3.1.3 Active@ UNDELETE

Active@ UNDELETE is a data recovery utility that you can use to restore accidentally deleted files and folders located on existing drives, and even on deleted or damaged partitions.

It is best to save recovered data on another logical, removable, network or USB drive. Make sure that you have access to another physical or logical drive before attempting to recover a file.

Name	Status	Type	File System	Volume Name
Local Disk (/dev/sda1)	Ready	Volume	NTFS	
New Volume (/dev/sdb5)	Ready	Volume	NTFS	New Volume
Local Disk (/dev/sdb6)	Ready	Volume	NTFS	
BOOT (/dev/sdc1)	Damaged	Volume	Unknown	BOOT
Active@ LiveCD (/dev/sdc2)	Damaged	Volume	Unknown	Active@ LiveCD
hybrid (/dev/sdc3)	Ready	Volume	BtrFS	hybrid

Output

```
9:28:27 PM CEST: Initialization completed.
9:28:27 PM CEST: Analyzing disk 'Removable Disk 3 (/dev/sdc)'...
9:28:27 PM CEST: Analyzing disk 'Fixed Disk 2 (/dev/sdb)'...
9:28:27 PM CEST: Analyzing disk 'Fixed Disk 1 (/dev/sda)'...
9:28:27 PM CEST: Initialization started
9:28:27 PM CEST: User Rights: Administrator Group
9:28:27 PM CEST: Recover Kernel Version 5.01.21
9:28:26 PM CEST: Version: 10.0.37
```

Scan Volumes (Logical Drives) for deleted files and folders and files by their signatures.

To recover files using Active@ UNDELETE:

1. From the **Active@ LiveCD** shell, click **Start > Favorites > Active@ UNDELETE**. The **Active@ UNDELETE** workspace opens up with all available disks listed in a tree view under **My Computer**.
2. Select a proper Local Disk under **My Computer** node and click **Undelete Files** toolbar button, or double-click it.
3. Mark **Detect files by their signatures** checkbox
4. Click **Select All** button (all signatures to be recognized), or select manually particular file types you want to detect and recover.
5. Click **Scan** button. Wait while local disk has been scanned.
6. Inspect found files and folders:
 - a) Browse folders tree to find your files and folders
 - b) Filter content by file type using **Filter by** toolbar text box
 - c) Click on found objects to **Preview** them
7. If volume is severely corrupted, file tree can be corrupted and not displayed as well. In this case try to expand Files Detected by Signatures tree, and look for your files by file type. Some file attributes, like creation time, original file name may not be recovered, however original file content can still be recovered (if it wasn't overwritten).
8. Place cursor on file or folder you want to recover and click **Recover** button.
9. The **Recovery Options** dialog box opens up. Do the following:
 - g. In the **Recover files to** field, revise the recovery path. Make sure it is not an original disk you are recovering data from.
 - h. To change file naming approach, conflict resolution modes and some advanced options, click **More Recovery Options** button, and change the recovery behavior.
 - i. Click **Recover**.

The file or folder is recovered at the new location.



Note A device scan or a search may take a long time. To stop a device scan or a search, click Stop at any time.



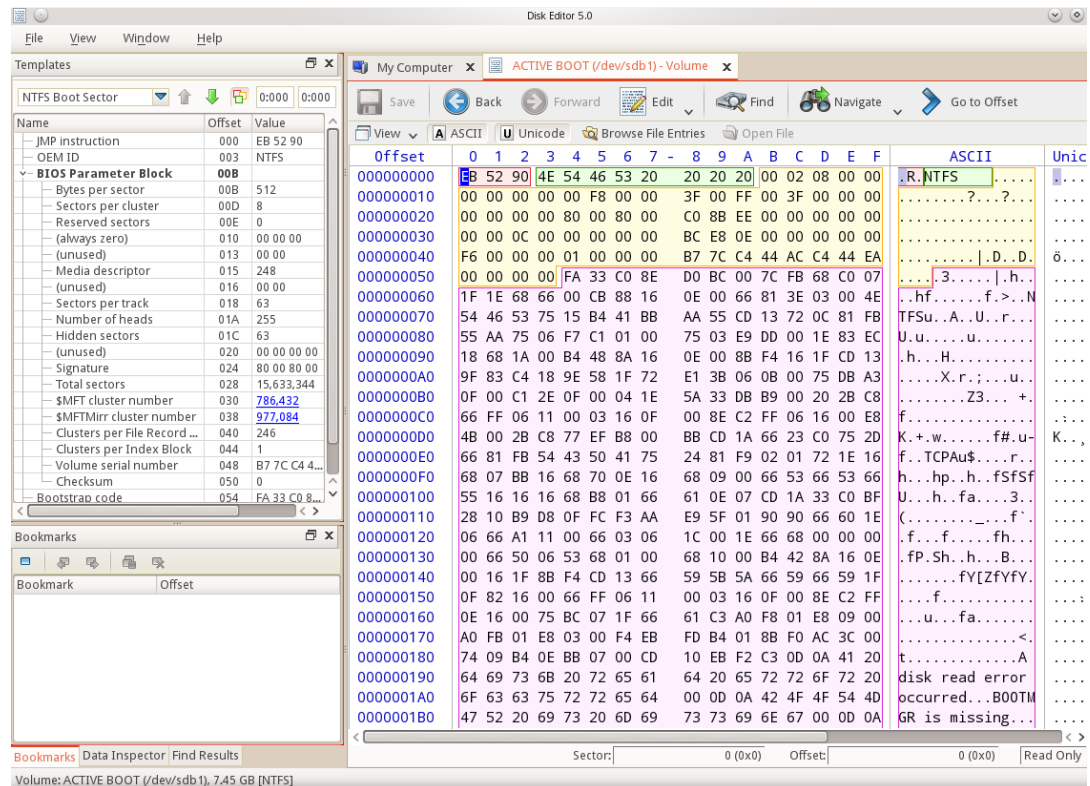
Note For more detailed instructions, see the Active@ UNDELETE Documentation.

3.1.4 Active@ Disk Editor

Active@ Disk Editor is a utility created to help you in editing disk's raw sector data. The editor displays information in binary and text modes at the same time. You can use this view to analyze the contents of data storage structure elements such as hard disks and partitions.

The Open Disk dialog box displays a list of available storage devices and a list of logical drives.

The Data Inspector displays whatever is currently under the cursor. It does so in ten different formats. This can help you interpret data as displayed in Hexadecimal View. If you choose to view the Data Inspector, the window always appears docked at the left panel when you are using Active@ Disk Editor.



A destructive virus may damage the MBR (Master Boot Record) and make it impossible to start the computer from the hard disk. When you start the computer, the code in the MBR executes before the operating system is started. If the MBR is corrupted, the operating system cannot start. The location of the MBR is always track (cylinder) 0, side (head) 0, and sector 1. You may use Active@ Disk Editor to repair a damaged MBR.

This section contains help with the following:

- Starting Active@ Disk Editor
- Changing the Workspace View
- Navigating to Key Sectors
- Editing Tools

Starting Active@ Disk Editor

To start Active@ Disk Editor:

1. From the Active@ LiveCD shell, click **Start > Favorites > Active@ Disk Editor**. Disk Editor device panel opens.
2. Click a device or a logical drive to select it.
3. Click **Open in Disk Editor**. The **Active@ Disk Editor** workspace appears.
4. To browse through the content of the open item:
 - Click either the hexadecimal area or the text area to focus on it.
 - Use the scroll bar, keyboard arrows or the mouse wheel.
5. To toggle the focus between hexadecimal and text panes, press **TAB**.

Changing the Workspace View

When you start Active@ Disk Editor, the default view shows the Info Pane on the left and the editing pane on the right, with a Status Pane across the bottom. You can change the default configuration of the workspace so that it opens each time with your custom settings.

To change Active@ Disk Editor default options:

1. In Active@ Disk Editor, click **View toolbar button**. The drop-down list of available views appears.
2. You can show or hide the Templates View, Properties View, Data Inspector View, Bookmarks View and Find Results View at the left of the workspace, for example for the Templates View:
 - To hide the Templates Pane, clear the Templates check box.
 - To show the Templates Pane, select the Templates check box, or you can simply click on View-> Windows and click on templates
3. To change the default size of the font in the editing pane, select a size from the **Text size** drop-down list.
4. To toggle the display of the current address offset between hexadecimal and decimal, from the **View** menu, choose **Hexadecimal Offset**.

Navigating to Key Sectors

To navigate to key sectors on the open item:

1. To open a different device or logical drive:
 - a. Click **Open Disk** from **File** menu, or press **Ctrl+O**. The **Open Disk** dialog box appears.
 - b. Click on a device or a logical drive to select it. Click **Open**.
 - c. The **Active@ Disk Editor** workspace appears.
2. To jump to a named sector or offset:
 - a. From the **Navigate** menu, choose **Go to Offset** or **Go to Sector**. The **Go to Offset/Sector** dialog box will open.
 - b. To jump to a named offset, type the offset value as Decimal. Use a prefix **0x** to use hexadecimal values.
 - c. To jump to a named sector, in the **Sector** field, type the sector number. To jump to a named cluster, in the **Cluster** field, type the cluster number.
 - d. Click **Ok**. The sector/offset appears in the editing panel.
3. To jump to the volume boot sector, from the **Navigate** menu, choose **Boot Sector (0)**. The boot sector appears.
4. To jump to the partition table, from the **Navigate** menu, choose **Partition Table**. The partition table sector appears in the editing panel.



Note This only applies for physical drives (HDDS, SSDs, etc) and not logical drives such as partitions or volumes.

5. To edit the partition table:
 - a. From the **Navigate** menu, choose **Partition Table**. Navigation will be positioned to the sector 0, and **Master Boot Record** template is applied. The Signature (55 AA) at the end of zero sector marks the end of the Partition Table.
 - b. Review the settings for partition table entries 1, 2, 3 and 4 in a **Template View** at the left side.
 - c. Turn on edit mode (**Ctrl+Alt+E**) and modify partition table parameters.
 - d. To save changes, click **Save**.
6. From the **Navigate** menu, you may jump to many named sectors. These sectors are listed with the sector name and a number that is unique to your hard drive.
 - To jump to the unallocated boot sector, from the **Navigate** menu, choose **Unallocated (<your partition size>GB) > Boot Sector (<your sector number>)**.

- To jump to various primary NTFS locations, from the **Navigate** menu, choose **Primary NTFS (<your partition size> GB)** and do one of the following:
 - To jump to the boot sector, click **Boot Sector (<your sector number>)**. The primary boot sector appears in the editing panel.
 - To jump to the boot sector copy, click **Boot Sector Copy (<your sector number>)**. The primary boot sector copy appears in the editing panel.
 - To jump to the MFT (Master File Table) sector, click **\$MFT (<your sector number>)**. The MFT sector appears in the editing panel.
 - To jump to the MFT mirror, click **\$MFT Mirror (<your sector number>)**. The MFT mirror sector appears in the editing panel.

Editing tools

You can paste code or text from the Windows Clipboard. Use these tools to copy and paste selected code.

To use editing tools:

1. To toggle whether or not to allow editing in the editing pane, from the **Edit** menu, choose **Allow Edit content**.
2. To select a whole area:
 - a. Click anywhere in a navigation view.
 - b. From the **Edit** menu, choose **Select All**, which will therefore select the whole area.
3. To select part of a sector, click and drag the cursor over some code. You can select code this way in either the HEX area or in the text area.
4. To copy HEX data, if you have selected code in the HEX area, from the **Edit** menu, choose **Copy Formatted** and selected HEX data will be copied to the Clipboard.
5. To copy text data, if you selected code in the text area, from the **Edit** menu, choose **Copy**. Selected text data is copied to the Clipboard.
6. To paste data from the Clipboard:
 - a. Click the cursor in the area where you want to paste data.
 - b. From the **Edit** menu, choose **Paste**. The data appears.
7. To discard all changes that you have not saved yet (if any were made) and roll back settings to the way they were at the last save, from the **Edit** menu, click **Revert Changes**.
8. To save changes, click **Save**.



Note By default, you cannot edit content in Active@ Disk Editor. You must choose **Allow Edit Content** in the Edit menu in order to change the code.



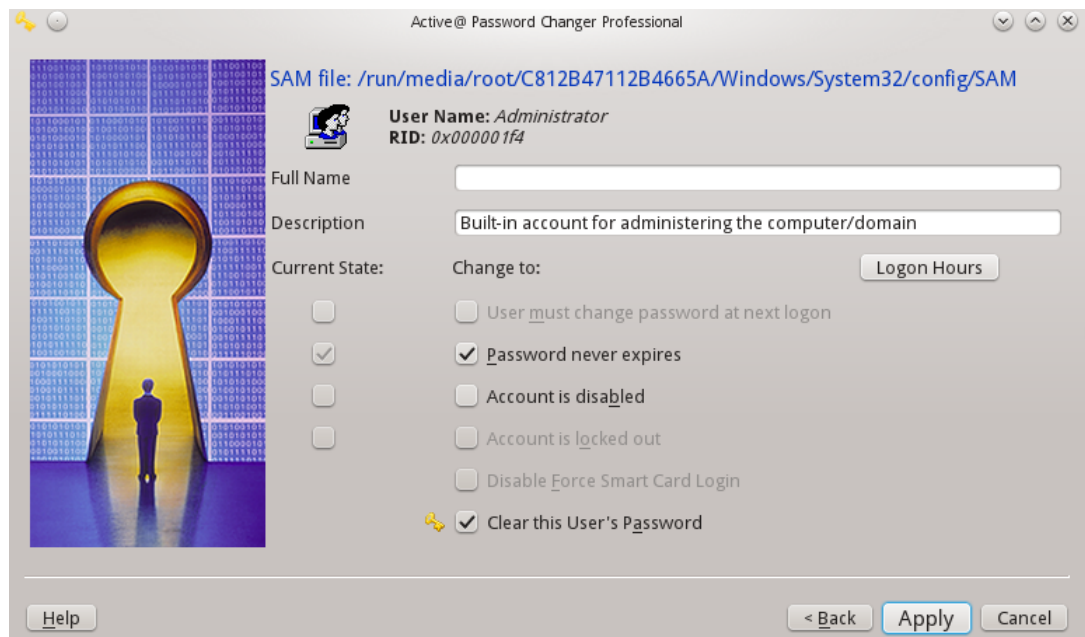
Note For more detailed instructions and support, see the Active@ Disk Editor Documentation.

3.1.5 Active@ Password Changer

You can use Active@ Password Changer to recover your Windows passwords and user account attributes.

Active@ Password Changer is designed for resetting the local administrator password on Windows systems in case the administrator's password is forgotten or lost. There is absolutely no need for you to re-install and re-configure the operating system.

This utility supports multiple hard disk drives, detects several SAM databases (if multiple operating systems were installed on one volume) and provides the opportunity to pick the right SAM before starting the password recovery process. It also displays a list of all local users.



Other Windows login security restrictions can be reset, for example:

- Account is disabled
- Password never expires

- Account is locked out
- User Must Change Password at Next Logon
- Logon Hours

With Active@ Password Changer you can log in as a particular user with a blank password.

To use Active@ Password Changer:

1. From the Active@ LiveCD shell, click Start > Favorites > Active@ Password Changer. The Active@ Password Changer dialog box appears. Click **Next**, which will open the Options window offering you to choose how do you want the search to be conducted.
2. To change passwords on the current drive, click **Choose the Logical Drive**.
3. To scan the disk and detect multiple operating systems, do the following:
 - a. Click **Search all volumes for MS SAM Database(s)**.
 - b. Click **Next**. The progress bar indicates the status of scanning. A list of SAM hives appears.
 - c. Select a database from the list.
4. Click **Next**. The list of users appears.
5. The list of users will open up. Select the user whose password you want to reset and click **Next**.
6. Select parameter check boxes to create the solution that you want. Those who just want to reset the password on the user account we suggest leaving the default settings.
7. Click **Apply**. A confirmation dialog box will open.
8. Click **Yes**. An information message will indicate that the changes have been made successfully.
9. Click **Finish**.
10. For each user that you want to change, repeat steps 5 through 9.



Note Manually copying SAM data base is possible only when the operation is being conducted from another operating system



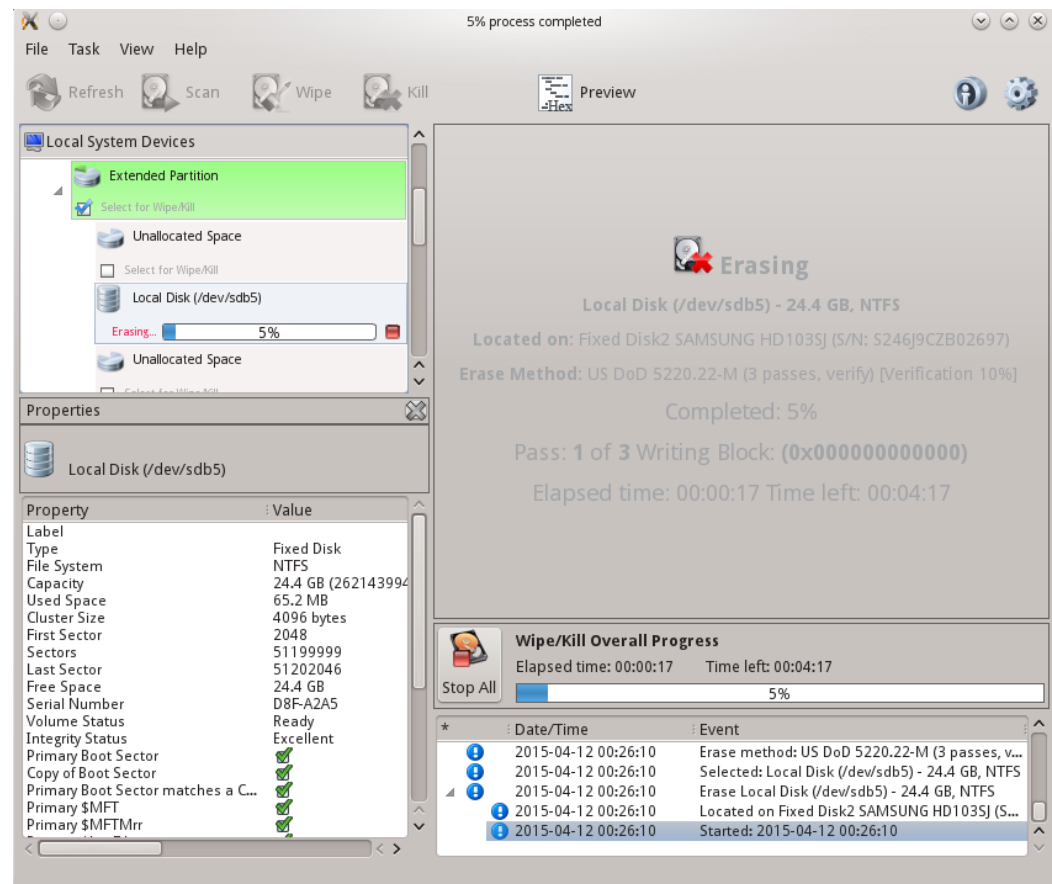
Note For more detailed instructions and support, see the Active@ Password Changer Documentation

3.1.6 Active@ KillDisk

Active@ KillDisk is a powerful utility that will:

- Wipe confidential data from an unused space on your hard drive
- Erase data from partitions or from an entire hard disk
- Destroy data permanently

Wiping the logical drive's deleted data does not delete existing files and folders. It processes all unoccupied drive space so that recovery of previously deleted files becomes impossible. Installed applications and existing data are not touched or affected by this process. Active@ KillDisk wipes unused data residue from file slack space, unused sectors, and unused space in MFT records or system records.



When you erase data with Active@ KillDisk, you destroy data permanently, conforming to any one of six international standards or your own custom settings.

Wiping drive space or erasing data can take a long time, so perform these operations when you are prepared to wait. For example, these operations may be run overnight.

To run Active@ KillDisk:

1. From the **Active@ LiveCD** shell, click **Start > Favorites > Active@ KillDisk**. After initializing, the **Active@ KillDisk** workspace appears with all available devices listed under **Local System Devices**.
2. Click a physical drive or a logical drive to select it. Properties of the selected device will appear in the **Properties** tab.
3. To scan the selected logical drive, click **Scan**. The **Progress** tab will appear, showing the status of the scan while **Time Left** counts down the remaining time.

When the scan completes, sub-folders will appear in the System Local Devices list and the folders and files in the selected drive will appear in the **Folders and Files** tab.

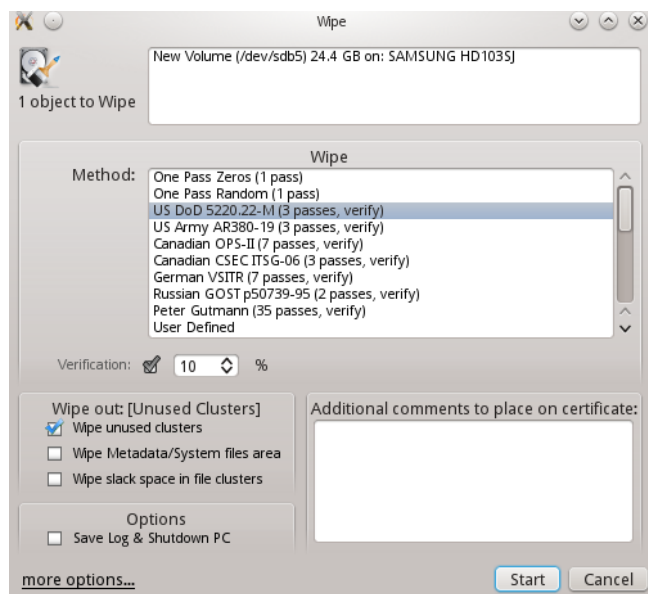
Available files and folders appear with a colored icon. Deleted files and folders appear with a gray icon.

4. After the scan has completed, you can:
 - Select existing and deleted folder and file information in the **Folders and Files** tab.
 - View sectors of data in a device or a logical drive. In order to do that, select a device or a drive and click **Hex Preview**. The **Data Viewer** appears. Scroll through the available data.
 - To view sectors of data in a file:
 - a. Select a logical drive. Files and folders appear in the right panel.
 - b. In the right panel, select a file.
 - c. Click **Hex Preview**. The **Data Viewer** appears. Scroll through the available data.
 - To clear data residue from unused sectors:
 - a. Select the check box next to a device or logical drive or multiple devices or logical drives.
 - b. Click **Wipe**, which will open up the **Wipe Free Disk Space** dialog.
 - c. Choose one of the methods from the **Wipe Method** list.
 - d. To set other wiping parameters click on **more options...** in the bottom left corner
 - e. Click **Start**
 - The **Confirm Action** dialog box appears.
 - Click **Yes**.
 - f. The process will be initialized with the **Progress** bar appearing at the lower side of the right panel.

- g. To stop the process at any time, press **ESC ESC** or click at the **Stop All** button near the progress bar. You can also stop the drive wipe by pressing the little red square near the progress bar at the **Local System Devices**.
- To erase data completely:
 - a. Select the check box next to a device or logical drive or multiple devices or multiple logical drives.
 - b. Click **Kill**. The **Kill** dialog box opens up.
 - c. Choose a method from the **Erase Method** list.
 - d. Set other erasing parameters by clicking on **more options...** in the bottom left corner. Once you have adjusted the settings to your liking press **Apply**.
 - e. Click **Start**
 - If the **Skip Confirmation** check box is clear, the **Confirm Action** dialog box will open up.
 - This is the final step before removing data from the selected drive for ever. Type **ERASE-ALL-DATA** in the text box and press **ENTER** or click **OK**.
 - f. The process will start and the **Progress** bar will appear.
 - g. To stop the process at any time, press **ESC**. You can also end the process by clicking on **Stop All** button or by clicking on the red square near the progress bar at the **Load System Devices**.

After the Wipe or Kill operation is complete, information about the wipe or erase session will be displayed in the **Session Log**.

Wiping or Erasing Methods



Select a wipe method or an erase method from the Method list:

One Pass Zeros or One Pass Random: The number of passes is fixed and cannot be changed. When the write head passes through the sector, it writes only zeros or a series of random characters.

US DoD 5220.22-M: The write head passes over the each sector three times. The first time with zeros (0x00), second time with 0xFF and the third time with random characters. There is one final pass to verify random characters by reading.

US Army AR380-19: The write head passes over the each sector three times. The first time with 0xFF, the second time with zeros (0x00), and the third time with random characters. There is one final pass to verify random characters by reading.

Canadian OPS-II: The write head passes over the each sector seven times (0x00, 0xFF, 0x00, 0xFF, 0x00, 0xFF, Random). There is one final pass to verify random characters by reading.

Canadian CSEC ITSG-06: The write head passes over the each sector three times (0xFF, 0x00, Random). There is one final pass to verify random characters by reading.
German VSITR: The write head passes over each sector seven times. (0x00, 0xFF, 0x00, 0xFF, 0x00, 0xFF, 0xAA). There is one final pass to verify random characters by reading.

Russian GOST p50739-95: The write head passes over each sector two times (p0x00, Random). There is one final pass to verify random characters by reading.

Gutmann most secure method: The write head passes over each sector 35 times overwriting data with different patterns.

User Defined: You indicate the number of times the write head passes over each sector. Each overwriting pass is performed with a buffer you supply separately, using ASCII or HEX values.

Please read KillDisk manual for more details about featured secure erasing methods.

Parameters for Wiping or Erasing

Verification: In order to verify the wipe method, you will need to select the **Verification** check box and set the amount of area the utility will read.. Because verification is a long process, you can specify a percentage of the surface to be verified. To wipe or erase without verification, clear this check box.

Wipe out Deleted/Unused data: This parameter appears only when you are wiping data from an unused space on the hard drive. The wiping process clears data residue from an unoccupied space on the hard drive and does not affect installed applications or existing data. This process contains three options:

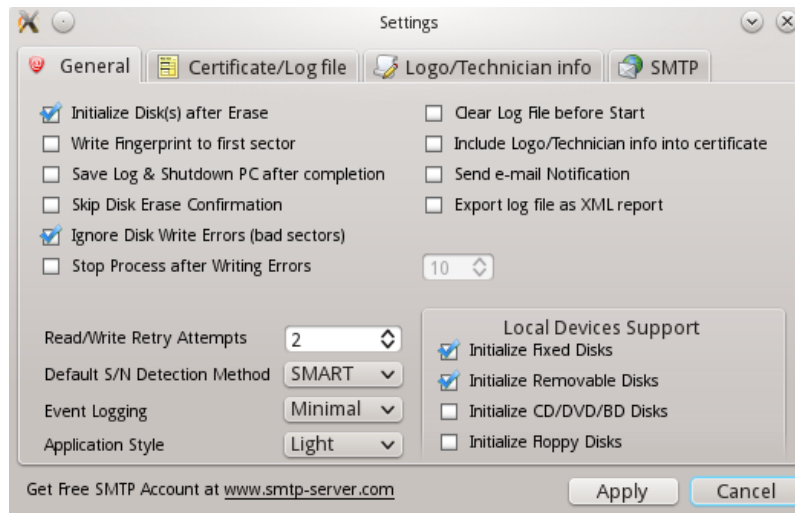
- Wipe unused clusters

- Wipe Metadata/System file area
- Wipe slack space in the file

You can choose to run only one or two of these options in order to make the process faster. If you want a thorough wiping of unused space, then include all of the three options.

General Options/Settings

General parameters allow you to turn features on or off or change default setting before you erase or wipe data from an unoccupied space. You can also change the look and feel of the application and its logging options. To view and change settings, press the F2 key, or click the Settings toolbar button.



Initialize Disk(s) after Erase: Because of the BIOS restrictions of some manufacturers, a hard disk device that is larger than 300 MB must have a MBR (Master Boot Record) in sector zero. If you erase sector zero and fill it with zeros or random characters, you might find that you cannot use the hard drive after erasing the data. For this reason KillDisk is programmed to create an empty partition table and write a typical MBR in sector zero. This process is otherwise known as disk initialization. **Retry Attempts:** To specify the number of retries to do when an error is encountered, enter the number in Retry Attempts.

Ignore Disk Write Errors (bad sectors): If this option is turned on, error messages will not be displayed while data erasing or verification is in progress. All information about errors will be written in the KILLDISK.LOG file. These messages will be displayed in the final Erasing report after the process has been completed.

Stop Process after Writing Errors: If by any chance writing errors appear during the wipe or deletion, you can adjust after how many errors would you like the KillDisk to terminate the process. **Clear Log File before**

Start: To truncate the session log before erasing or wiping starts, select the Clear Log File before Start check box. To append this session's information to the existing session log, clear the Clear Log File before Start check box.

Skip Disk Erase Confirmation: The confirmation dialog box is the final step before either erasing or wiping data. To bypass this dialog box, select the Skip Confirmation check box. To include this safety step, clear the Skip Confirmation check box. It is safer to run Active@ KillDisk with this check box cleared (default state).

Write fingerprint to disk's first sector: If fingerprint has been written to the first disk's sector, next time you boot from this disk, you can see disk erase status (erase date/time, erase method, completion status, etc..). In case if errors occurred, or erasing stopped, status will be FAILED and displayed in red color.

```
Active@ KillDisk for Linux v.9.8 (build 4.04.27)
Copyright (C) 1998-2014 LSoft Technologies Inc.

Sanitation of 000000000000000001 started 2014-05-02 at 16:54:28
Secure erase method: One Pass Zeros
Sanitation completed 2014-05-02 at 16:54:42
Result: SUCCESS
```



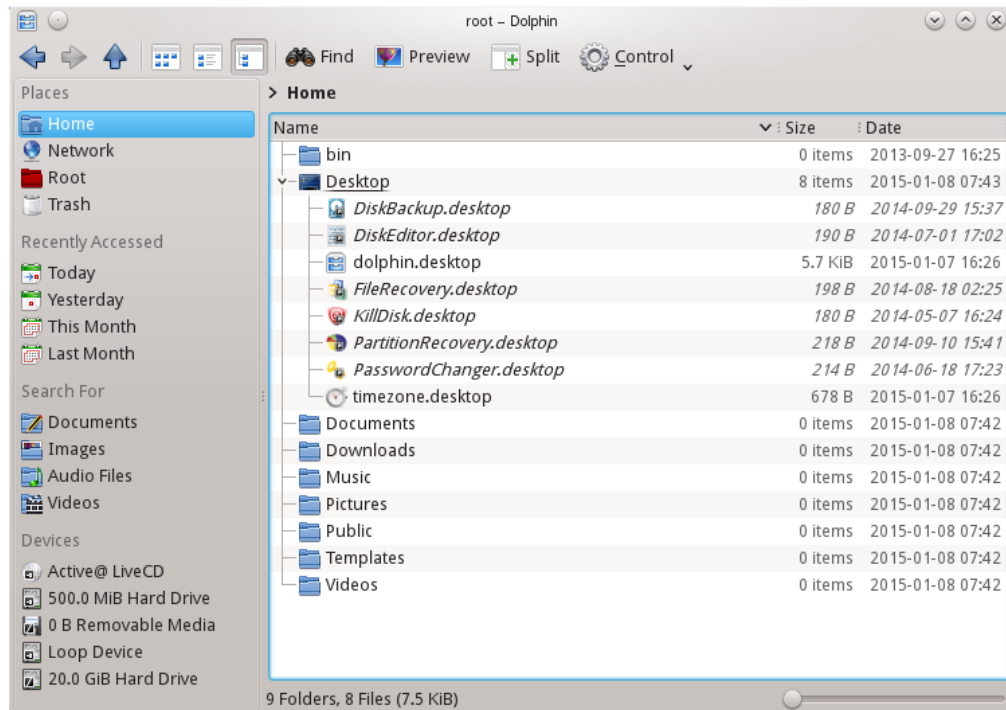
Note For more detailed instructions and support, see the Active@ KillDisk Documentation.

3.2 Utilities

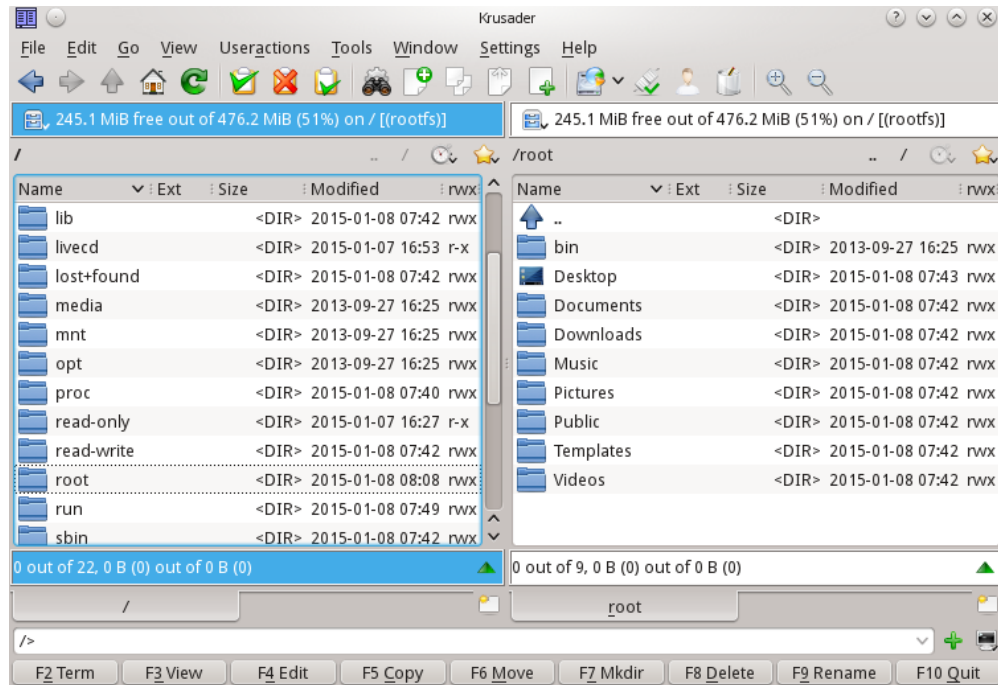
To access one of the utilities, click the start button. A menu will appear with shortcuts to utilities and groups of utilities under **Applications** section. Some of the utilities have icons on the task bar and shortcuts on the desktop.

3.2.1 File Managers & Internet

Dolphin File Manager – displays, copies/moves and manages files/folders on local disks as well as network attached drives.



Krusader File Manager – is a two panel file manager with many advanced features.



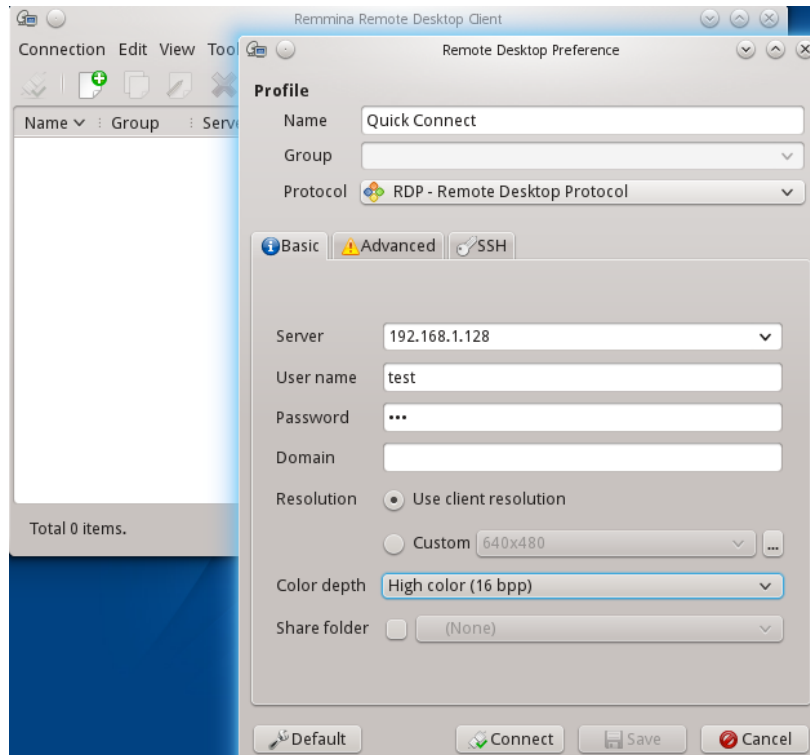
Super User (Root mode) – shortcuts for Dolphin & Krusader file managers are available in menus. As long as Active@ LiveCD is a utility toolset and has no security, root user (super user) has no password.

SeaMonkey web browser enables internet exploring, reading RSS, downloading archives and packages, inspecting web pages, manage cookies and so on...

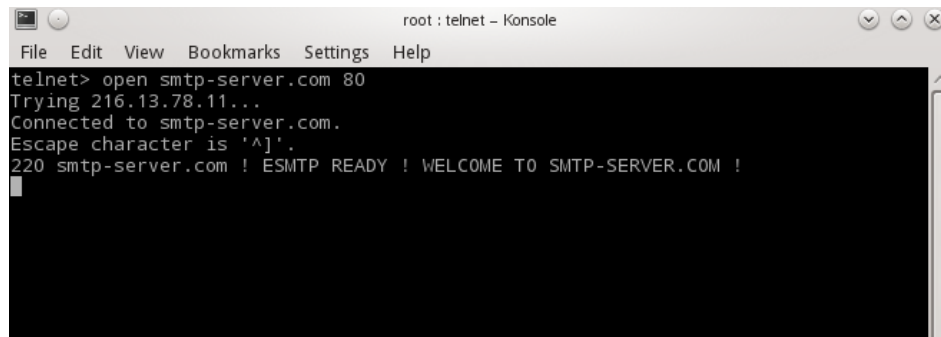
SeaMonkey mail client – is a simple, lightweight but featureful, and easy-to-use e-mail client, being able to send and receive e-mails. It provides intuitive user-interface and advanced features, like powerful filtering, search and junk mail control.

3.2.2 Remote Access

Remmina Remote Desktop Client allows you to connect to and manage remote hosts using different protocols (RDP, SFTP, SSH, VNC).

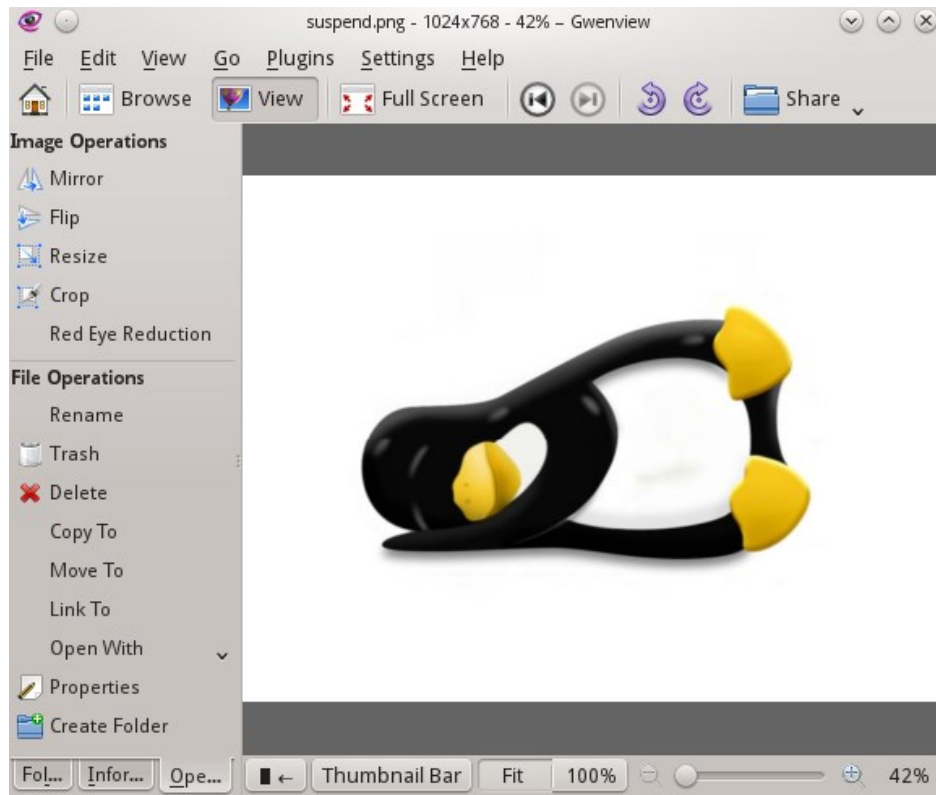


Telnet is a simple remote console interface (terminal) connecting to the remote host on the specific TCP port.



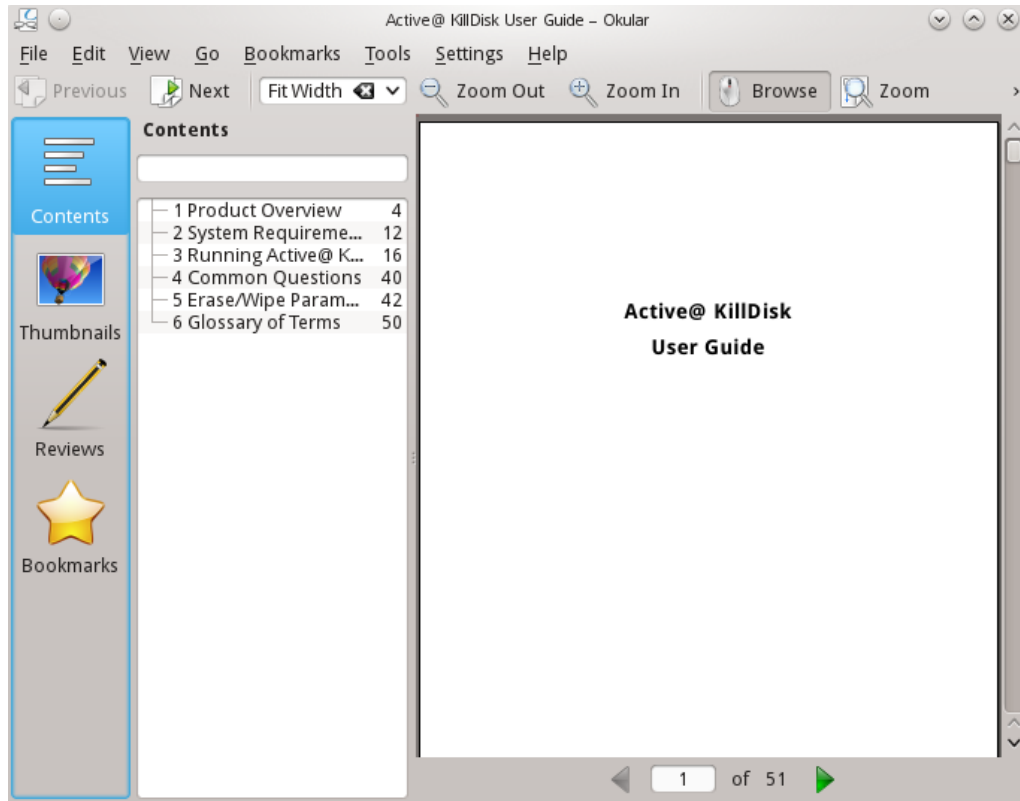
3.2.3 Graphics & Multimedia

Gwenview KDE Image Viewer is able to preview and edit almost all picture formats (JPG, PNG, XPM, GIF, TIFF, ...)

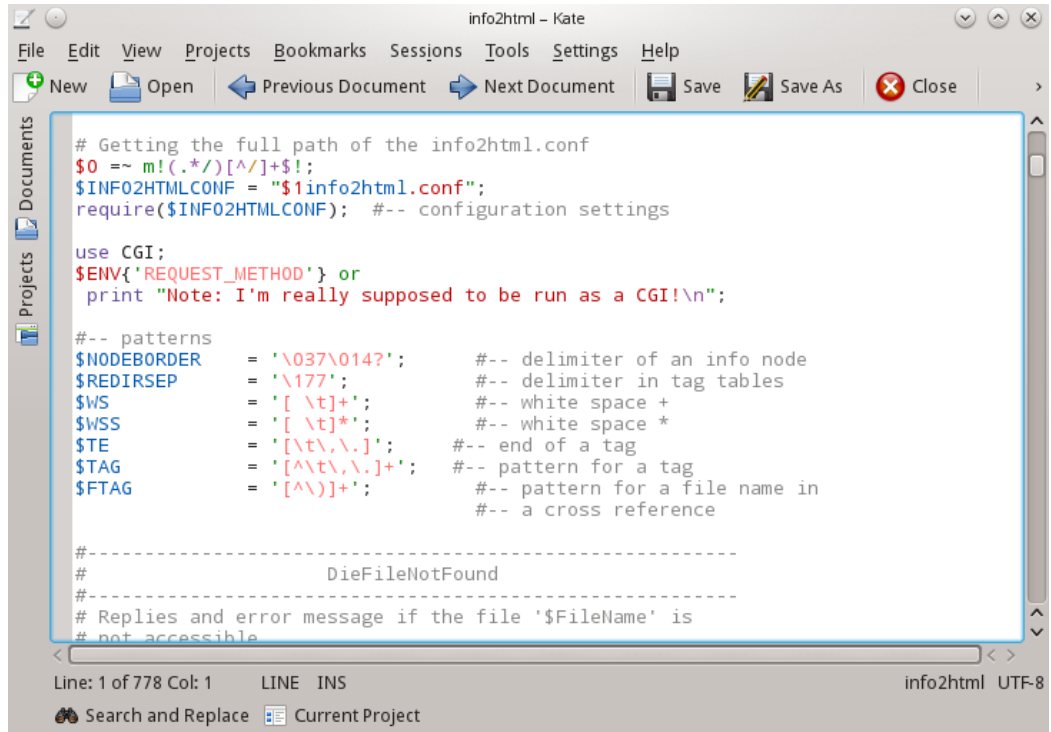


3.2.4 Office & Editors

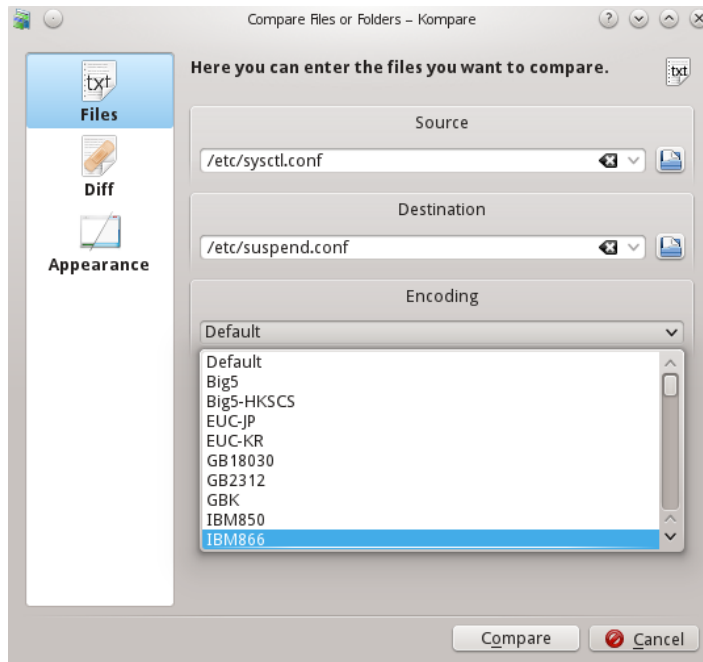
Okular Document Viewer – previews almost all document types (PDF, PostScript, EPS, DjVu, FB2, eBook, CHM, TeX DVI, WWF, Plucker, ...).



Kate Advanced Text Editor previews and edits text files stored in any code pages, in many text formats (txt, script, perl, html, xml,...), applying different coloring schemas.

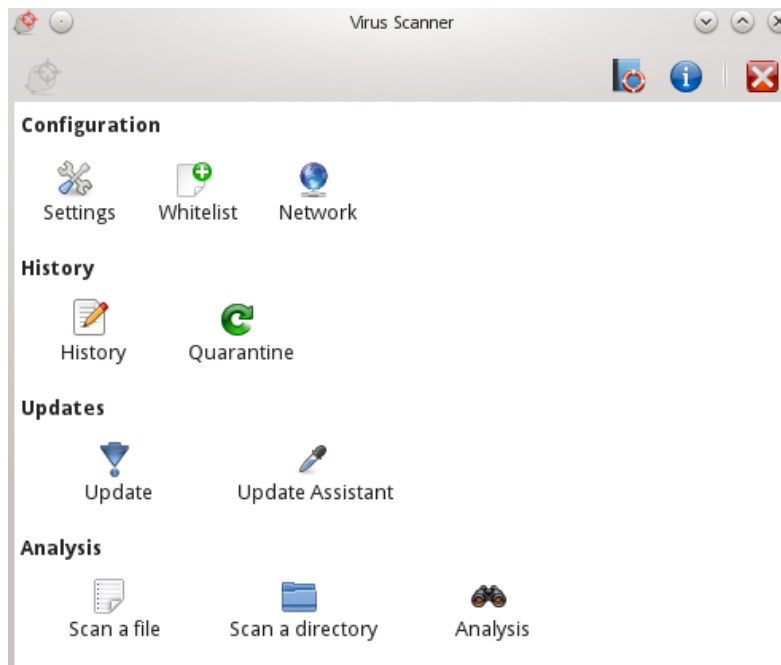


Kompare Diff/Patch Frontend helps to compare any files (text and binary) and folders bit-by-bit to find out any differences, if there are any.

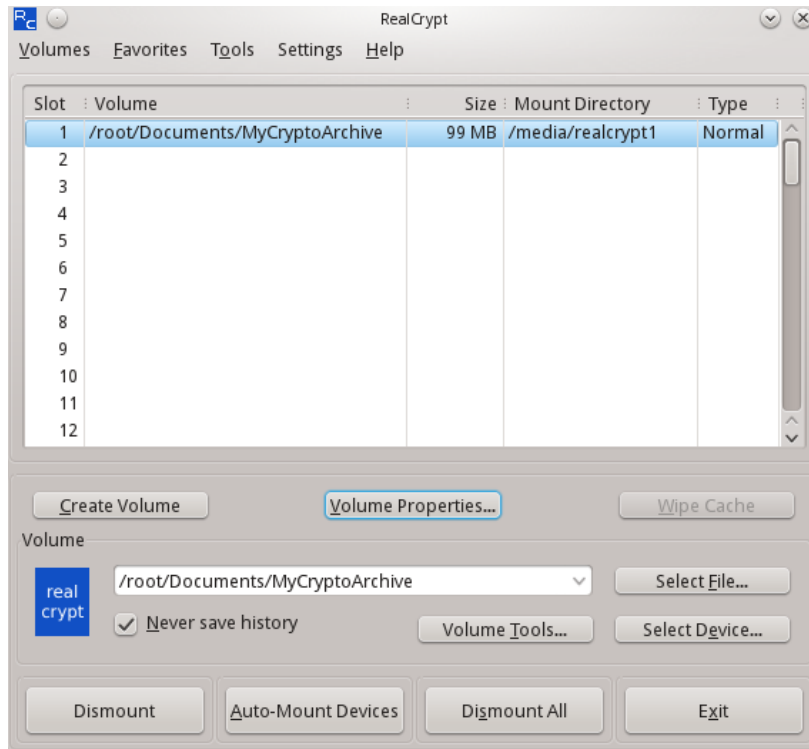


3.2.5 Security Tools

ClamTk Virus Scanner – downloads the latest virus database, scans your local disks for viruses and sends infected files to quarantine, if needed.

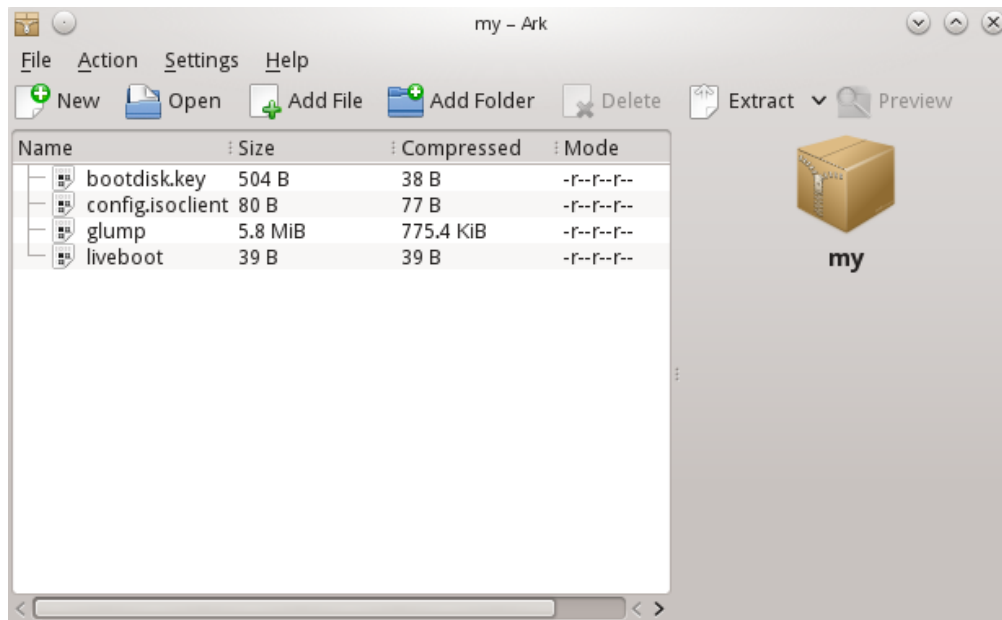


VeraCrypt - secure tool that creates, attaches and manages encrypted volumes stored in files, or encrypts whole partitions.

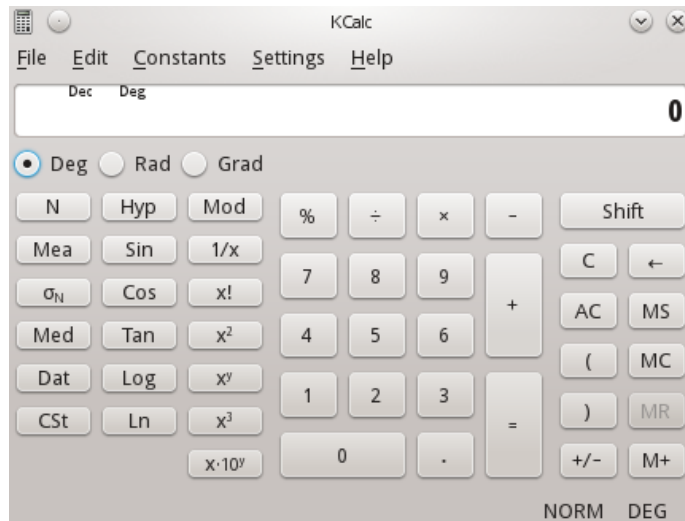


3.2.6 Support utilities

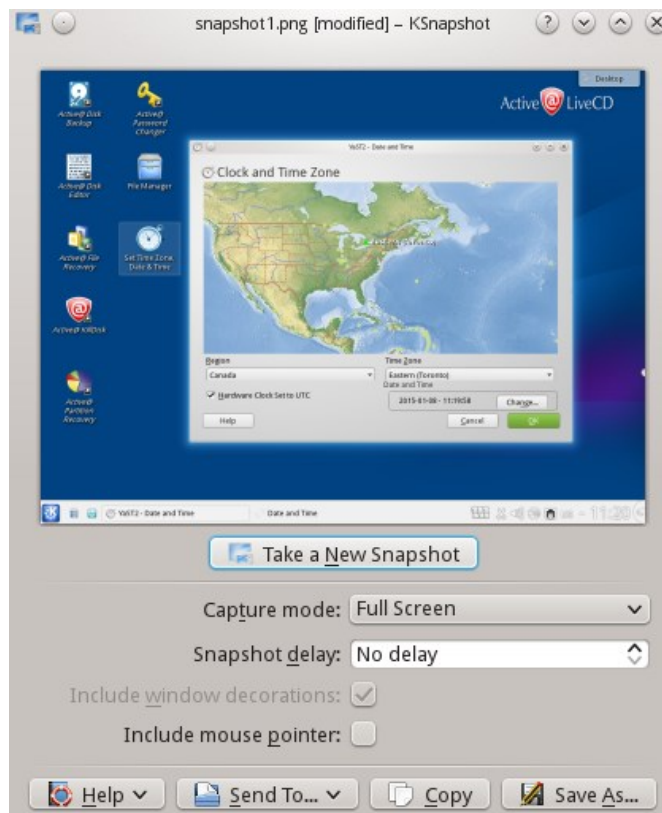
Ark Archiving tool to create or de-compress TAR, RAR, ZIP, BZIP, CAB, 7z, TAR, GZ, GZIP archives, RPM & DBM packages.



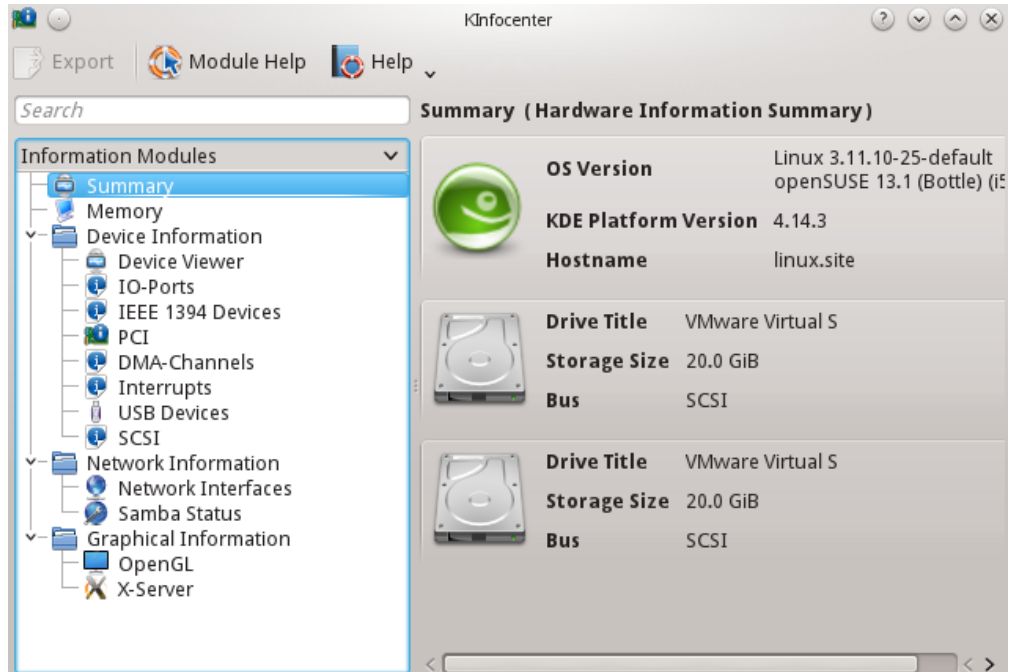
KCalc Scientific Calculator – helps in performing basic calculations. Science Mode, Statistic Mode & Numeral System Modes (Hex, Dec, Oct, Bin) are also available.



KSnapshot Screen Capture Program can be activated with a [PrntScrn] key and can save your current display content into an image file.



KinfoCenter Info Center displays Operating System Summary, Memory, Hardware, Drivers & Network information

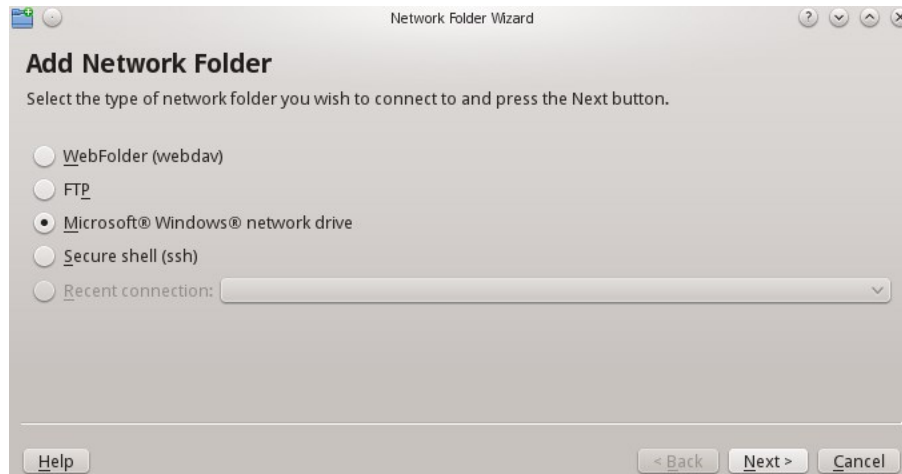


Klipper Clipboard tool manages clipboard, its content and history.

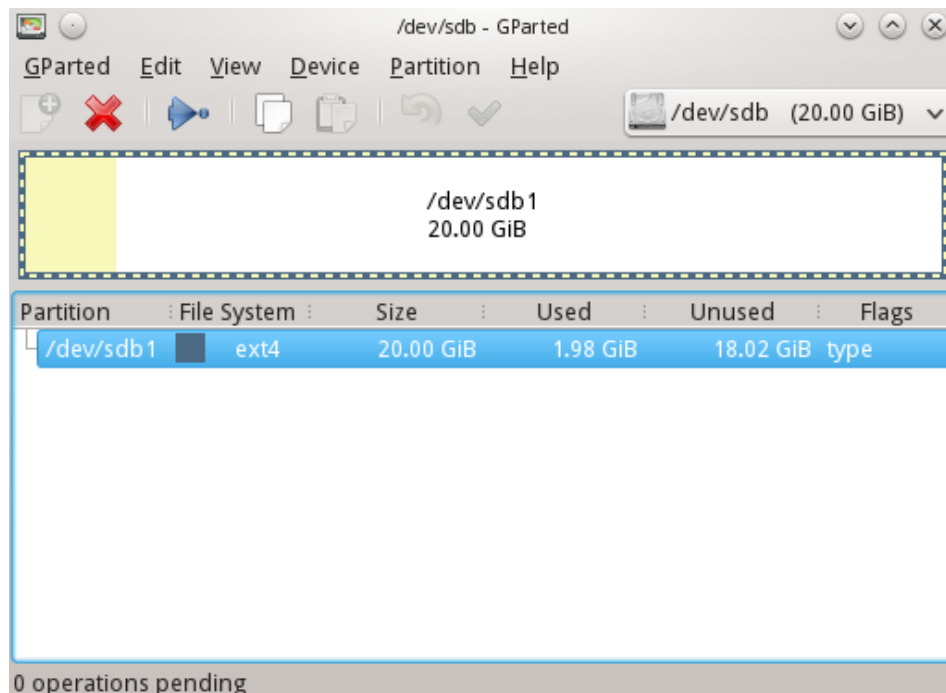


3.2.7 System Tools

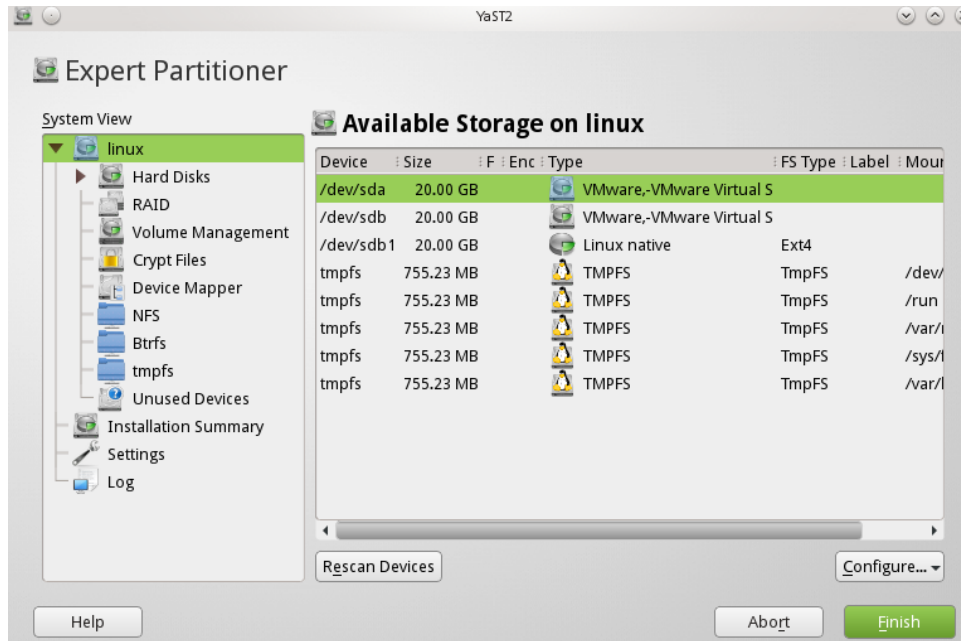
KNetAttach Network Folder Wizard – connects network folders via webdav, FTP, ssh, and Microsoft Windows Network Drive protocols.



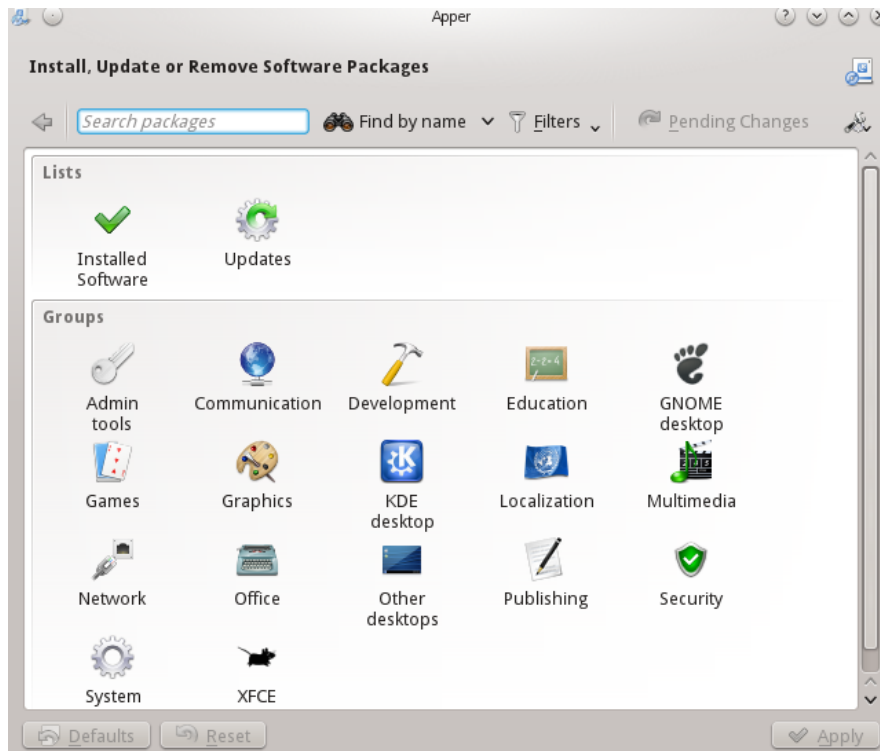
GParted Partition Editor displays, creates and edits local disks and partitions.



YaST2 Expert Partitioner – advanced disk management tool. Supports different types of disks, RAID management, Network mappings, Volume management and much more.



Apper Software Manager allows you to download and install additional RPM packages from OpenSUSE repositories on the web. It can update and remove software packages from the system as well.





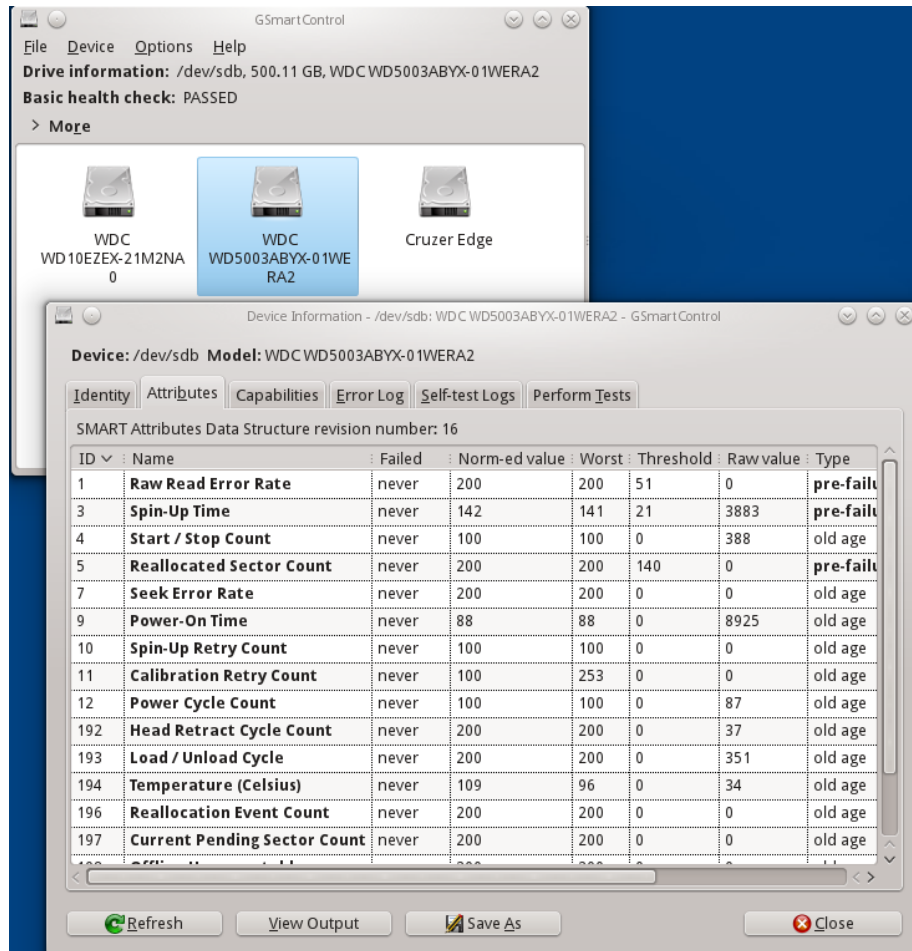
Note If you launched Active@ LiveCD from a bootable USB disk, all downloaded and installed software packages will be stored on USB locally and will be available when you launch Active@ LiveCD the next time.

KSysGuard System Monitor displays and manages all local processes and displays the System Load (CPU History, Memory & Swap History, Network History).

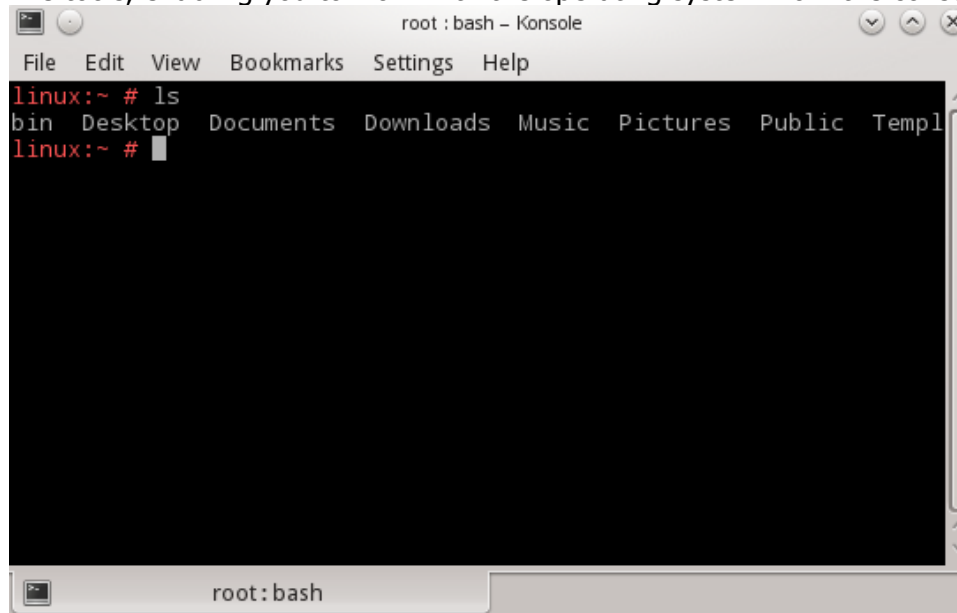
The screenshot shows the KSysGuard System Monitor window. The window title is "System Monitor". It has a menu bar with "File", "View", "Settings", and "Help". Below the menu bar, there are two tabs: "Process Table" and "System Load". The "Process Table" tab is active. There is a search bar with the text "Quick search" and a button "End Process...". A dropdown menu shows "All Processes". The main area is a table with the following columns: Name, Username, CPU %, Memory, Shared Mem, and Window Title. The table lists various system processes, with "ksysguard" highlighted in blue. At the bottom of the window, there is a status bar showing "144 processes", "CPU: 0%", "Mem: 537.4 MiB / 1.5 GiB", and "No swap space available".

Name	Username	CPU %	Memory	Shared Mem	Window Title
plasma-desktop	root	1%	62,872 K	38,464 K	
ksysguard	root	3%	11,120 K	18,260 K	System Monitor
Xorg	root	14%	27,860 K	14,260 K	
kwin	root	2%	22,156 K	25,736 K	
kmix	root		11,136 K	16,220 K	
klipper	root		10,340 K	16,296 K	
krunner	root		9,680 K	20,384 K	
kded4	root		9,368 K	18,396 K	
kglobalaccel	root		5,772 K	10,104 K	
kmsserver	root		5,140 K	11,112 K	
NetworkManager	root		5,124 K	4,992 K	
dhclient	root		4,368 K	1,268 K	
knotify4	root		3,736 K	12,664 K	
kdeinit4:	root		3,720 K	12,224 K	
klauncher	root		3,612 K	5,444 K	
kactivitymanagerd	root		3,192 K	12,656 K	
polkit-kde-authe...	root		2,976 K	12,960 K	
kuiserver	root		2,828 K	11,580 K	

GSmartControl - Hard disk drive and SSD health inspection tool for querying and controlling SMART (Self-Monitoring, Analysis, and Reporting Technology) data on modern hard disk and solid-state drives. It allows you to inspect the drive's SMART data to determine its health, as well as run various tests on it.



Konsole Terminal, Super User Mode Terminal and XTerm – command line tools, enabling you to work with the operating system from the console.



4 About Boot Priority

To boot from a CD, DVD or USB device, make sure that the device has the boot sequence priority over the hard drive.

4.1 BIOS Boot

BIOS (Basic Input Output Subsystem) is a programmable chip that controls how information is being passed to various devices in the computer system. A typical method to access the BIOS settings screen is to press ESC, F1, F2, F8, F10 or Del during the boot sequence.

BIOS settings allow you to run a boot sequence from a removable disk, a hard drive, a CD-ROM drive or an external device. You can configure the order that your computer searches these physical devices for the boot sequence. The first device in the order list has the first boot priority. For example, to boot from a CD-ROM drive instead of a hard drive, place the CD-ROM drive ahead of it in the priority list.

Before you set boot priority for a USB device, plug the device into a USB port.

To specify the boot sequence:

1. Start the computer and press ESC, F1, F2, F8, F10 or Del during the initial startup screen. Depending on the BIOS manufacturer, a menu may appear.
2. Choose to enter BIOS setup. The BIOS setup utility page will open up.
3. Use the arrow keys to select the BOOT tab. System devices will appear in order of priority.
4. To give a CD or DVD drive boot sequence priority over the hard drive, move it to the first position in the list.
5. To give a USB device boot sequence priority over the hard drive, do the following:
 - Move the hard drive device to the top of the boot sequence list.
 - Expand the hard drive device to display all hard drives.
 - Move the USB device to the top of the list of hard drives.
6. Save and exit the BIOS setup utility.

The computer will restart with the changed settings.

Some computer manufacturers allow you to select the device that contains the boot sequence from a special device selection menu. The example below uses a Dell system board.

To set boot priority using a device selection menu:

1. When the computer starts to boot up, after the manufacturer's ID screen, press F12 several times. The device selection menu will open.
2. Use the up and down arrows to select **CD-ROM**.
3. To boot from the selected device, press **ENTER**.



Note Using an incorrect BIOS setting can cause a system malfunction. Please follow the BIOS guide provided with your computer motherboard. If you read these instructions and you are not sure how to change a setting, it is better to leave it as the default setting.

4.2 UEFI Secure Boot

Some modern computers use new advanced UEFI x64 or x86 secure boot approach instead of the standard **BIOS boot**.

Active@ LiveCD fully supports UEFI secure boot on both 32-bit & 64-bit systems, and will boot up the machine automatically.

In case any malfunctions with UEFI secure boot (if your machine does not boot after you set up boot priority as it is described above), you should check that **BIOS boot** is enabled (**Legacy mode**), or UEFI is disabled.

Here is how you can check your BIOS settings.

At the moment of turning your computer on, you will see an option to enter SETUP. Depending on the manufacturer of your system, you can press the DEL key, the F2 key or another key that is listed on screen to access the system BIOS. If you are not sure, consult the User Guide that came with your computer or call the manufacturer's technical support for assistance.

Once in your system BIOS, look under the Boot menu to find an option that says "UEFI/BIOS Boot Mode" or "UEFI Boot". In the case of "UEFI/BIOS Boot Mode" switch the mode from "UEFI" to "Legacy" mode.

If you see "UEFI Boot", switch the option from "Enabled" to "Disabled". Be sure to save your BIOS changes and exit to reboot your computer. You should now be able to boot up from Active@ LiveCD.

5 Glossary

BIOS settings

Basic Input Output Subsystem. Programmable chip that controls how information is passed to various devices in the computer system. A typical method to access the BIOS settings screen is to press ESC, F1, F2, F8, F10 or Del during the boot sequence.

boot priority

First device, or any device that is higher in the order list having preference over devices that are lower in the order. BIOS settings allow you to run a boot sequence from a floppy drive, a hard drive or a CD-ROM drive. You may configure the order that your computer searches these physical devices for the boot sequence. For example, to boot from a CD-ROM drive instead of a hard drive, place the CD-ROM drive ahead of the hard drive in priority.

boot record

See MBR.

compressed cluster

Data that uses less disk space. When you set a file or folder property to compress data, the file or folder uses less disk space. While the size of the file is smaller, it must use a whole cluster in order to exist on the hard drive. As a result, compressed clusters contain "file slack space". This space may contain residual confidential data from the file that previously occupied this space. KillDisk can wipe out the residual data without touching the existing data.

cluster

Logical group of disk sectors, managed by the operating system, for storing files. Each cluster is assigned a unique number when it is used. The operating system keeps track of clusters in the hard disk's root records or MFT records. (See lost cluster)

exclusive access

Lock that is applied to a partition for exclusive writing access, for example while recovering deleted or damaged files or folders. The recover operation must have exclusive access to the target partition while recovering files. If another application or the operating system is using the target partition, you must close all applications or system processes that may be using the target partition before you may lock it.

FAT

File Allocation Table. File that contains the records of every other file and directory in a FAT-formatted hard disk drive. The operating system needs this information to access the files. There are FAT32, FAT16 and FAT versions.

free cluster

A cluster that is not occupied by a file data. This space may contain residual confidential data from the file that previously occupied this space.

file slack space

Unused portion of a cluster. The smallest file (and even an empty folder) takes up an entire cluster. A 10-byte file will take up 2,048 bytes if that is the cluster size. This space may contain residual confidential data from the file that previously occupied this space.

deleted boot records

Damaged or erased MBR. In a damaged disk, if the location of the boot records is known, the partition table can be reconstructed.

hive

Highest level of organization in the Windows registry. At this level, system and local variables are stored.

ISO

Informal term for a disk image in the ISO 9660 file standard format. ISO 9660 file system is a standard, published by the International Organization for Standardization. It defines a file system for CD-ROM or DVD-ROM media that allows you to read the same CD or DVD whether you're on a PC, Mac, or other major computer platform. Making a disk image in the ISO 9660 file standard (an ISO image) is a common way to electronically store and transfer the contents of a hard drive. An ISO image often has the filename extension .ISO (although not necessarily), and is commonly referred to as an "ISO".

lost cluster

Cluster with an assigned number in the file allocation table, even though it is not assigned to any file. You can free up disk space by reassigning lost clusters. In DOS and Windows, you can find lost clusters with the ScanDisk utility.

MBR

Master Boot Record. All disks start with a boot sector. When you start the

computer, the code in the MBR executes before the operating system is started. The location of the MBR is always track (cylinder) 0, side (head) 0, and sector 1. The MBR contains a file system identifier.

MFT records

Master File Table. File that contains the records of every other file and directory in an NTFS-formatted hard disk drive. The operating system needs this information to access the files.

root records

See FAT.

SAM

Security Account Manager. Database stored as a registry file in Windows. It stores users' passwords in a hashed format. Since a hash function is one-way, this provides some measure of security for the storage of the passwords.

sector

Smallest unit that can be accessed on a disk. Sectors are segments within each track.

track

Circle of data around a disk. Tracks form concentric circles on a disk.

unallocated space

Space on a hard disk where no partition exists. A partition may have been deleted or damaged or a partition may not have been created.

unused space in MFT records

The performance of the computer system depends a lot on the performance of the MFT. When you delete files, the MFT entry for that file is not deleted, it is marked as deleted. This is called unused space in the MFT. If unused space is not removed from the MFT, the size of the table could grow to a point where it becomes fragmented, affecting the performance of the MFT and possibly the performance of the computer. This space may also contain residual confidential data (file names, file attributes, resident file data) from the files that previously occupied these spaces.